



2008
2009
2009 年度報告
2009 ANNUAL REPORT



背景與宗旨	1
主席的話	2
工作匯報	3
董事名錄	4
管理委員名錄	5-6
架構圖	5-6
人力編制	7
各單位工作匯報	9-24

Background and Mission	26
Chairman's Foreword	27
Services Report	28
List of Directors	29
List of Management Board Members	30
Organization Chart & Manpower	31-32
Our Services	33-48



收入及支出概覽	50
Income and Expenditure	
Key Figures	
核數師報告	51-54
Auditor's Report	
捐款回條	55
Donation Form	
服務單位通訊錄	56
Service Units Contact	

背景

香 港宣教會為一基督教會，由一九五四年開始在香港區發展福音工作，至今在港建立了十多間堂會。

香港宣教會除積極傳揚福音和建立教會外，也透過社會服務具體地表達基督對人的愛和關懷；由五十年代至今，先後興辦了學校、自修室、老人中心、自負盈虧的綜合家庭服務中心及社區中心，以服務社區上有需要之人仕。

香港宣教會為增強對社會服務之關注和社會大眾的認受性，遂於九五年二月廿八日向公司註冊處及稅務局申請成立非牟利慈善團體「香港宣教會社會服務處有限公司」，並獲法人地位，全面輔助各項社會服務的發展。 ■

宗旨

實 踐耶穌基督傳揚福音和服務人群的精神，為個人、家庭及社區的需要，提供優質及結合福音的社會服務。 ■



主席的話

香 港宣教會於2009年1月4日特別會員大會正式通過本會的組織更新，其中成立了社會服務部，目的是為香港宣教會的「社福」發展確立一個明確的位置，方便和肯定本會「社會服務處」在香港宣教會的角色和價值。而可見的變動，「總會」將會移交香港宣教會轄下各中心的管治權給「社會服務處」全權處理。

從政策上而言，這是有利「服務處」未來的發展，使我們有更多的自由和彈性來計劃社會服務的發展，使服務處的工作為社會上有需要的人士帶來更多的祝福和希望。這也是香港宣教會整體的心願；願主耶穌基督的恩典普及萬千的生命；願社會更多的守望相助；願人人的生命可以得到全面的培育和發展。

服務處的未來發展，我們會秉持過往的美好傳統，提供優質的服務和關懷外；在組織的建制上，我們需要更大的努力，把總會移交我們的工作做得更好，更能落實神給我們的託付。除此，有關社會的不同議題和人實存境況的需要，也是本處要認真的考慮和禱告，求神賜我們有足夠的勇氣和智慧，擬定長遠的社會政策，與各方友好共同促進社會邁進美好的向度。願你能成為我們的幫助。 ■

香港宣教會社會服務處主席
文楚君先生



工作匯報

服務的信念

實踐耶穌基督傳揚福音和服務人群的精神，讓社會上有需要的人，不論貧富，也可以在有需要時得到支援和感受到關懷。透過自負盈虧的方式，興辦各類社會服務，讓持份者能體現自力更生、資源共享、互助共融的和諧生活。

服務的成效

在2008-2009年度，透過服務收費、政府和公益金津助以及熱心人士捐款，使機構的總收入達到二千一百多萬港圓。各服務單位合共舉辦了116,748次活動和服務，受惠人次亦達510,999。作為一個年輕和細小的機構，在沒有穩定的經濟資源而能達到這個成績，是因為得到一眾有不計較、靈活和具創意之同工的努力及各社會賢達和熱心團體的支持，方能達至。

服務的特色

今年，除了在服務數量和經濟上有所增長外，服務的地域也隨著「推廣使用過濾軟件計劃」而擴展至港、九和離島。服務範疇也突破了生死的禁忌，在聖雅各福群會協助下，為長者開展了「後顧無憂」生死教育服務。為了推動更多人關注健康生活模式，更締結了北區的公民教育委員會、學校、商舖、屋苑和不同的團體的協作，舉行了有近千人參與的「北區健行日」，開創了在新界北區最多人參與以增進健康為目的之步行活動。

服務的發展

在零八年中，機構開辦了另一個以自負盈虧方式營運的服務中心——恩霖社區服務中心，以回應新發展區的服務需求。我們希望，新中心能隨著社區的結構和人口的轉變來提供多元化的服務；也希望能藉不同的服務和其他持份者的協作，可以促進受惠者結連為一互助共融的社區。同時，在大埔大元邨的另一所自負盈虧的社區服務中心也正在籌備之中，希望能在零九年底落成啟用，進一步將上帝給世人的愛和關懷，帶到每一個有需要的角落。 ■

執行秘書

呂慶忠先生, MH

董事名錄

(截止2009年3月31日)

主席

文楚君先生

司數

陳小強先生

文書

陳金蓮牧師

董事

陳汝生牧師、葉寶言先生、李高強先生

協調辦事處同工

呂慶忠先生MH (執行秘書)

朱紫薇女士 (行政主任)

名譽顧問

賴錦璋先生MH

涂謹申議員



管理委員名錄

(截止2009年3月31日)

▶ 大興白普理老人中心

主席

文楚君先生 (中心總監)

委員

李高強先生、溫振東先生、
陳朱少嫻女士、陳彼信先生、劉婉娜女士

列席

葉燕女士 (中心主任)

▶ 白普理上水家庭中心 / 綜合家居照顧服務隊 / 學校服務隊 / 恩霖社區服務中心

主席

陳汝生牧師 (中心總監)

委員

楊志光先生、李佩君小姐、張杰先生、冼家慧小姐

列席

呂慶忠先生 (督導主任)、

朱紫薇女士 (行政主任)

▶ 粉嶺家庭中心

主席

陳金蓮牧師 (中心總監)

委員

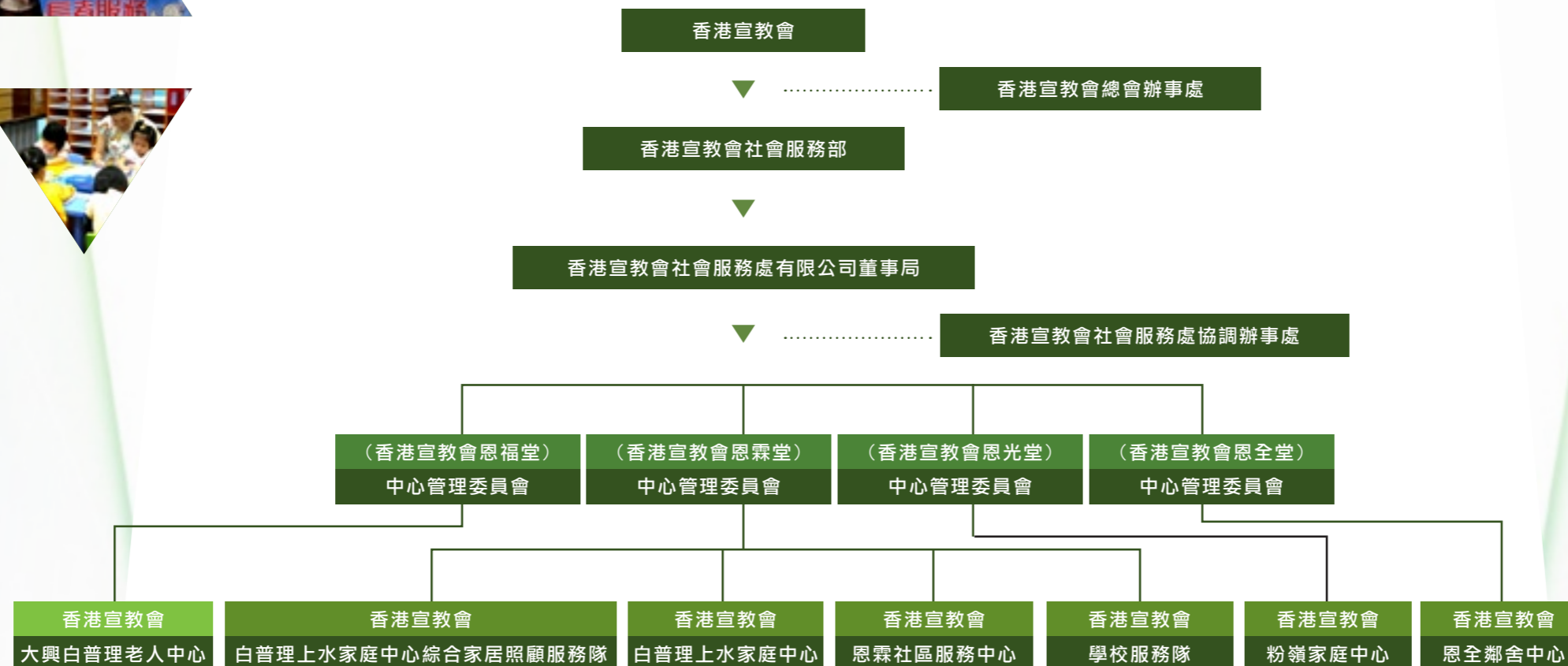
楊偉業先生、陳永泰先生、謝裕富先生、

陳小強先生

列席

翁雅韻女士 (中心主任)

架構圖



人力編制

	協調辦事處	大興白普理老人中心	白普理上水家庭中心	綜合家居照顧服務隊	粉嶺家庭中心	學校服務隊	恩霖社區服務中心	小計
▶ 社會工作主任	0.1	0	0.2	0.5	0	0.1	0.1	1
▶ 助理社會工作主任	0	0	1	2	1	5	1	10
▶ 社會工作助理	0	2	1	2	0	6	3	14
▶ 註冊護士	0	0	0.2	0.8	0	0	0	1
▶ 行政主任	0.2	0	0.3	0.5	0	0	0	1
▶ 幹事(行政)	0	0.5	1	2	1	0	1	5.5
▶ 幹事(活動)	0	1	2	0	2	1	1	7
▶ 助理幹事	0	1	3.5	1.5	0	1	3	10
▶ 服務員(家居)	0	0	2	12	0	0	0	14
▶ 服務員(車務)	0	0	0	2	0	0	0	2
▶ 服務員(廚務)	0	0	0	3	0	0	0	3
▶ 服務員(總務)	0	1	0	1	1	0	0.5	3.5
▶ 總人手	0.3	5.5	11.2	27.3	5	13.1	9.6	72

2008-2009年度報告 各單位工作匯報



香港宣教會大興白普理老人中心

緊貼時代·面對逆境· 建立豐盛晚年

背景及發展歷程

香港宣教會大興白普理老人中心，成立於一九八二年十一月，是香港宣教會首間老人福利服務單位。中心秉承基督的愛，為屯門區的長者提供

多元化之服務，鼓勵長者享受豐盛之晚年，同時為個人、家庭之需要，提供靈性、生理、心理社群上的支援及發展服務。服務對象為年滿60歲或以上之長者。

迎接奧運·創造歷史

2008-2009年度是一個充滿感恩的年份，因為中國成功地舉辦了一個非常出色的奧運會，為世界各地注滿生氣；亦向全世界展現了中國人舉辦大型比賽的能力。

香港亦有幸成為其中一個比賽城市（馬術比賽），政府亦舉辦了多項賽馬活動

讓市民有份參與。中心舉辦一連串與奧運相關的活動，當中有「奧運前奏」介紹今屆奧運地點、奧運比賽項目及參加國家等，使長者有初步認識從而加強對奧運的投入。另外長者亦參加了「開心騎馬仔」、「奧運義工隊」等，帶動他們接觸及參與此

積極晚年·學習新事

中心亦為會員提供多元化活動及小組，讓他們發揮個人長處，建立自信及建立社交網絡。過往一年中心曾舉辦的活動有：夫婦茶聚、父母親節遊樂日、剪髮大行動、百年禁區中英街一天遊、懷舊金曲齊安歌、關懷

大使、健康常識講座、愛心服務隊等。除此之外，中心獲匯豐銀行社區發展基金贊助購買手鐘樂器一套，使長者能夠學習手鐘的技巧及方法，讓長者有一個嶄新的、新奇的學習及視野，在參與中，同時亦培養長者的音樂細胞及

服務內容包括：

- ▶ 社交及康樂發展服務
- ▶ 健康支援服務
- ▶ 個人輔導及轉介服務
- ▶ 教育及發展性小組服務
- ▶ 長者服務優惠申請
- ▶ 平安鐘

世界性盛事，提高社會動態發展觸角。



節奏感，參加者都獲益良多。



預先計劃、後顧無憂

面對死亡是一生必然面對的一課，誰也不能獲免。長者在晚年中能為自己預備或預早計劃個人身後安排及處理的例子不多，往往交由自己家屬處理。為使長者在這人生大事上可以參與及

決定，中心與「聖雅各福群會」合作舉辦「生死教育」系列，目的是讓長者預早規劃身前死後的事宜，減低對死亡的恐懼及積極面對。內容包括：「後顧無憂講座」、「後顧無憂自遊行」，主要帶領

長者親身到墳場、棺木及壽衣店參觀，讓長者知道這些用品的種類及售價，計劃自己的財政狀況等，另外亦有認識本港最新的花園葬等詳細內容。長者事後都有積極回應及持開放的態度談論。

總結

總括而言，今年是非常值得高興的一年，中國不但舉辦了成功的奧運比賽，中心亦獲得多方的支持及參與，大大增加了區內服務團體的合作，同時亦推動社區資源交流，使長者在社區上更能發動長者力量，貢獻社群。

統計摘要

會員人數	偶到服務	開放節數
735	34,060	540

	服務類別	服務次數	服務人次
小組	教育/發展性服務小組	323	11,727
	社交/康樂服務	152	3,283
	興趣小組	854	11,601
	服務性小組	120	1,496
活動	交誼性活動	42	2,165
	旅行	17	939
	文化/節日活動	11	1,243
	健康活動/講座	79	4,054
	義工服務/探訪	3	253
	其他活動	8	2,073
	午餐小聚	205	4,105
	個人服務/查詢	12	4,370
	個案	—	26
	合共服務	1,826	47,335



香港宣教會白普理上水家庭中心

靠主真道·衝破逆浪·
建構健康快樂人生

背景及發展歷程

白普理上水家庭中心在1991年3月於上水彩園邨設立，由恩霖堂所承辦及管理，為香港宣教會首間以自負盈虧方式運作的綜合家庭服務中心。中心初期以學童託管及家長活動為主要服務，後於1994及1998年與兩隊由香港政府津助的家務助理隊(後於2004年轉型綜合家居照顧服務隊)整合，使中心

服務概況

因應社區人口及環境的不斷變化，中心一直都保持敏銳的觸角，十八年來不斷嘗試多種類的先導服務和開拓資源。我們感謝上帝，能讓我們一無所缺，且能

服務更全面及更具規模。隨著社區的轉變及服務的發展，中心於2007年9月，把已經成熟發展的學校服務部撥歸新成立的「香港宣教會學校服務隊」營辦，為機構開拓了另一全新的自負盈虧服務單位，以全港學校為服務對象。

及後，因關心上水清河邨的服務需求，遂向會方及政府申請開辦另一

持續把中心的規模和服務擴展。在2007年，我們促成了「學校服務隊」的成立；今年則全力扶助了「恩霖社區服務中心」的開辦。隨著兩個新服務

自負盈虧服務單位——香港宣教會恩霖社區服務中心。隨著新中心於2008年7月在上水清河邨投入服務後，中心便把原先的學童及家長服務團隊，調往支援新中心的發展。

在經歷了兩年的服務及架構重整後，白普理上水家庭中心亦因應社區人口結構的變化，加強開拓中年人士及長者的服務，為建構一和諧及健康的社區而努力。

單位的開展，中心的規模較前縮少了三分之二，但我們仍持守著多元創新的方針，致力開拓更多切合社區需要的服務。



在2008-2009年度內，中心仍繼續以往的課餘託管服務、兒童發展及成人教育活動、家庭及社區教育活動、社區健康推廣活動、鄉郊服務、長者社群發展活動及家居支援服務。雖然人手少了，但仍能維持722節的開放時間，提供諮詢和偶到服務予25,992人次。此外，更舉辦了9,828次服務和活動集會，讓65,428人次從各項個人及群體的服務中得到支援及發展上的幫助。

回顧過往一年，我們的鄉郊服務能維持與九條鄉村的數百位長者緊密而持續的接觸，除給予適時的健康資訊和康體活動外，也讓長者們



有機會走進市區，感受現代都會的生命力和到訪義工們的關懷。而由「社區投資共享基金」贊助的“城鄉長幼互聯網”計劃，亦在今年完滿結束，締造了城市與鄉郊、年長與年幼的互相連結外，也促進鄉村居民重新發掘和發展讓城市人洗滌心靈的生態與文物



旅遊活動。

雖然，我們的兒童及家長服務團隊移師往「恩霖區服務中心」了，但我們每週仍維持為八十多對幼兒及其家長舉辦的「幼兒Play group」活動，除讓家長在此增強了育兒

的技巧外，也讓幼兒能在入學前對群體生活有所體驗和學習，在心智與群性發展上均有良好的幫助。而中心的一班長者，每次見到這些活潑的可人兒，也感生活充滿活力和心境開朗了。

今年，中心繼續得到「健康護理及促進基金」的贊助，舉行

“健樂每一步”計劃，連同區內的學校和私人屋苑，在區內設計了不同的健步路線和設立由十數間商舖組成的「打氣站」，鼓勵北區居民，建立多作步行的健康生活習慣。最後，更聯同北區公民教育委員會舉行了有過千人參加的「北區健行日」，促成了由民、商、官攜手推動北區為健康社區的先例。

未來展望

展望未來，中心將加強在成人及長者方面的服務提供，以回應人口老化的社區需要。我們在今年更接獲「安老事務委員會」的撥款推行為期兩年之“左鄰右里——社區關愛長者試驗計劃之‘沿途有你’”，致力促進社區人士參與防止長者受虐待的事故惡化。我們期待，透過中心種種服務，能締結健康、睦鄰和關愛的社區，實踐基督愛人的使命。

統計摘要				
會員人數		偶到服務	諮詢服務	開放節數
個人	家庭			
304人	173人	10,830人次	15,162人次	722節

服務類別	活動次數	服務人次
課餘託管服務	202	7,699
幼兒親子活動	119	5,019
兒童發展及成人興趣小組	462	5,652
家庭及社區教育活動	81	2,393
社區健康服務	211	12,897
鄉郊服務	385	10,927
長者社群發展活動	428	9,158
家居支援服務	7,754	7,754
社區投資共享基金計劃： 城鄉長幼互聯網、 柔情青輝助新苗	186	3,929
合共服務	9,828次	65,428人



香港宣教會白普理上水家庭中心 綜合家居照顧服務隊

弱而不衰·退而不隱· 積極晚年

背景及發展歷程

綜合家居照顧服務隊為香港宣教會白普理上水家庭中心轄下的服務單位，由香港政府提供資助。

為配合家庭服務多元化的需要，中心於一九九四年向香港政府申請資助首隊家務助理隊，並於上水太平邨設立隊址，為北區居民

提供到戶生活支援服務。於一九九八年八月，因應區內服務需求的增加，再獲香港政府資助第二隊家務助理隊。及後，因應長者護理服務的需求日增，於二零零四年四月，兩隊家務助理隊轉型為“綜合家居照顧服務”，並改名為“香港宣教會白普理

上水家庭中心綜合家居照顧服務隊”。為了整合中心的其他服務及方便接觸區內居民，服務隊的總辦事處及聯絡處設於彩園村香港宣教會白普理上水家庭中心本部內，而日常服務的運作則仍以上水太平邨的隊址為主，使服務受眾能得到更方便和更全面的照顧。

服務目標

綜合家居照顧服務隊的目標，是為自我照顧能力及維持家庭正常功能有困難的個人與家庭，提供協助以支援日常生活所需，使能夠選擇繼續生活在熟悉

的環境和社區。服務除以鞏固及支援有需要的家庭和人士在生活及護理事務的處理外，對社群、心理及靈性發展上的需要亦同時給予適度的幫助。



服務對象

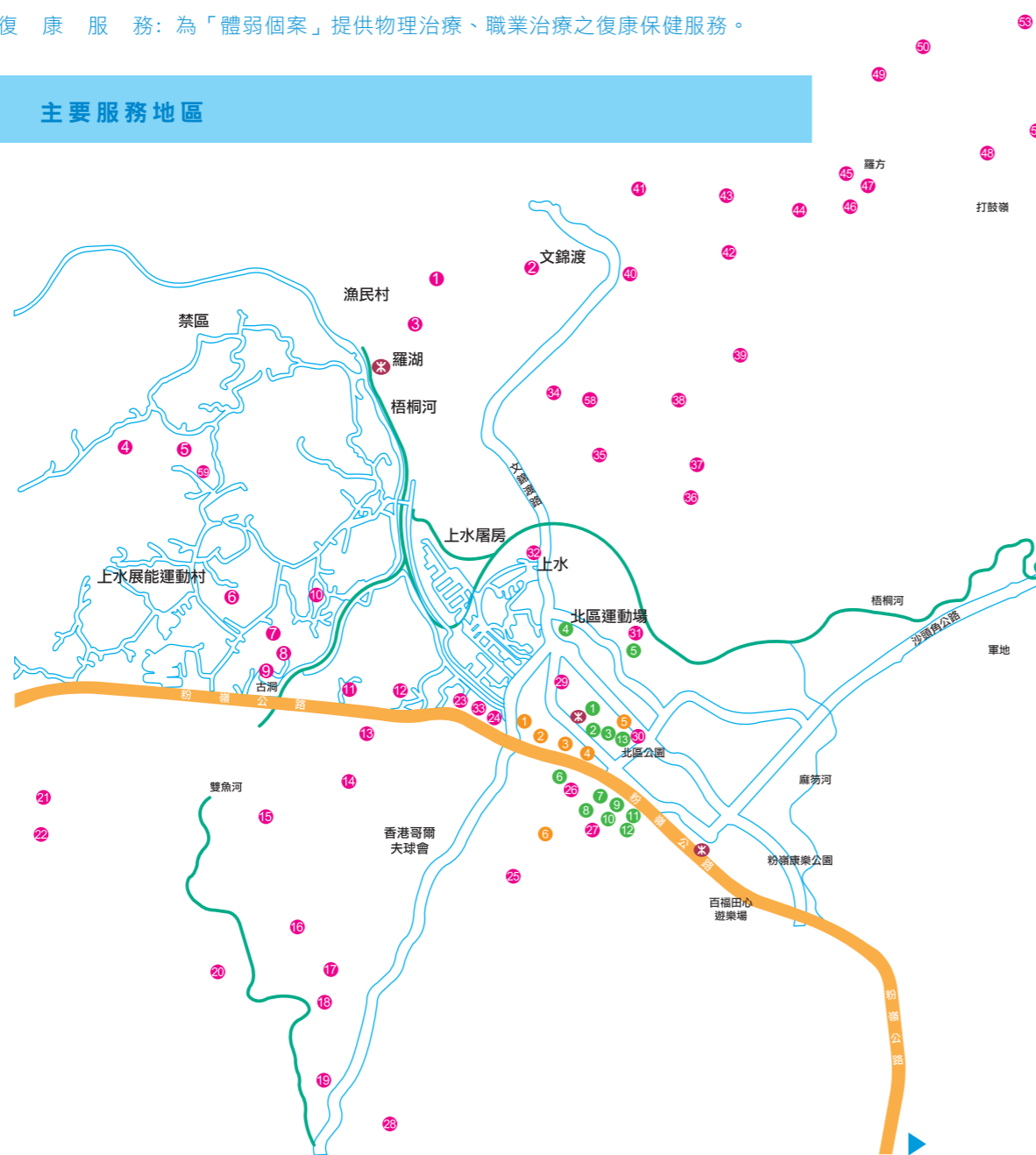
- ▶ 自我照顧有困難的人士，例如年老、體弱、傷殘、長期病患者、精神病康復者、照顧者未能給予足夠照料的人士等；及
- ▶ 現正接受院護照顧或其他社會服務，在來往接受服務或假期回家時，需護送或其他服務者；及
- ▶ 其他由社會工作者認為有此項服務需要的受眾；及
- ▶ 社會福利署轉介之「體弱個案」。



服務內容及提供方法

- ▶ 家居清潔：一般家居地方的清潔，如：清理天花板、地板、廳房、廚廁等地方。
- ▶ 個人護理：協助洗澡、洗頭、抹身、復康性運動等個人料理。
- ▶ 膳食服務：為弄膳有困難人士，提供膳食。
- ▶ 洗衣服務：服務受眾洗衣有困難或不便時，代安排清洗及處理其衣物。
- ▶ 購物及代辦服務：協助行動不便的服務受眾購買日常用品，代辦水、電費之繳交、取藥等事宜。
- ▶ 護送服務：護送服務受眾接受診治、散步或往接受社會服務。
- ▶ 照顧幼兒：家庭出現困難或變故時，代短時間幼兒照顧。
- ▶ 集體及特別活動：促進服務受眾繼續社區生活和參與活動如：社交小組、健康檢查、講座及戶外活動等
- ▶ 健康護理：由護士上門為「體弱個案」提供適切的護理服務。
- ▶ 復康服務：為「體弱個案」提供物理治療、職業治療之復康保健服務。

主要服務地區



服務概況

我們認為，傳統的上門服務規劃，要在長者出現問題才給予支援是過於被動和消極。因此，服務隊結合了位於彩園邨的白普理上水家庭中心，在提供恆常的基本服務之外，增加了能促進長者心靈和社群發展的活動，如：長者茶聚、食品製作和手工小組、旅行、生日會、義工探訪、理髮、節日慶祝……等，

有效地提升服務受眾的社交網絡、身心靈的發展和對生活的積極性。

從第一隊家務助理隊算起，服務隊在北區提供服務已進入第十五個年頭。在的一個年度內，服務隊除維持既有的服務質量外，仍會透過不同的培訓，提升同工在護理技巧、病理認識、營養及健康教育……等專業技能。同時，亦計劃



加強對長者及護老者的進一步連繫和支援，使能有更愉快的生活和豐盛的晚年。

鄉郊 ▶

- 29 石湖墟 26 吳屋村 19 蕉徑村 25 丙崗村 17 蓮塘尾 16 唐公嶺 24 大頭嶺
- 41 木湖 28 營盤村 13 金錢 3 羅湖 27 雞嶺 9 古洞 34 沙嶺
- 10 河上鄉 31 天平山村 56 塘肚山村 38 缸瓦甫 15 坑頭 58 虎地坳道
- 36 華山村 39 恐龍坑 40 新屋嶺 42 週田村 11 燕崗 57 蓮麻坑 44 鳳凰湖
- 48 東風坳 12 松柏壟 5 馬草壘 14 牛地 32 上水圍 33 天光甫 23 客家圍
- 22 鹿尾村 37 杉山 6 鳳崗 8 石仔嶺 35 長甫頭 20 長瀝 21 麒麟村
- 7 塘角 30 掃管甫 18 陳屋甫 49 竹園 52 缸窰 43 老鼠嶺 53 下香園
- 51 銅鑼坑 45 較寮村 46 塘坊 54 香園圍 4 鷓鴣坑 59 信義新村 2 南坑
- 55 橫瀝 50 松園下 47 簡頭圍 1 圓嶺仔 58 虎地坳道

私人屋苑 ▶

- 10 華慧園 6 威尼斯花園 7 維也納花園 9 欣翠花
- 8 海裕苑 12 翠彤苑 5 奕翠園 3 上水中心 13 上水名都
- 11 蔚翠花園 1 龍豐花園 2 新都廣場 4 翠麗花園

公共房屋 ▶

- 2 彩園邨
- 4 太平邨
- 1 彩蒲苑
- 5 順欣花園
- 3 旭埔苑
- 6 清河邨



總結

今年，我們見到越來越多長者前來申請服務；健康程度較弱之餘，生活支援系統也較少，對機構服務的依賴程度也提升了。雖然我們服務的個案數目多達三百多宗，比與政府協議的百多宗服務承諾增加了超過一倍。但基於對求助者的關愛，我們仍結合非資助家庭中心的資源，盡量滿足每一位到來申請服務的受眾，以舒緩他們的困境。除此以外，今年更加強了服務隊的小組和戶外活動，好讓一眾體弱長者能有較多機會走出家居，接觸人群，提升其社交和身心發展的機會，建構健康快樂的晚年。 ■

統計摘要

▶ 接受服務個案(以2009年3月底之數字為依歸)

	個案類別				總個案
	長者個案	傷殘個案	家庭特殊需要個案	特別體弱個案	
接受服務個案	315	28	25	10	378

▶ 服務統計

服務類別	家居服務	護理服務	社交活動	總計
	(家居清潔、送飯、洗衣、護送、代辦等服務)	(健康護理、復康護理、復康保健等服務)	(小組、戶外活動等)	
提供次數	52,358	6,165	31	58,554
接受服務人次	52,358	6,165	954	59,477



粉嶺家庭中心

服務優化·福音結合·身心靈均衡發展

背景及發展歷程

粉嶺家庭中心在1993年5月於粉嶺華明邨設立，為本會第三所社會服務

中心。同樣以自負盈虧模式，為區內家庭提供綜合性服務，包括學童託管及家庭教育服務、

社區教育活動、家庭活動及資源服務、義工發展及培育服務、宗教輔導及生活教育。



服務概況

本年，中心主要服務如下：

約為上午及晚上。

的全人發展課程，除支援雙職家長外，亦有助學生善用餘暇參與有益身心的活動。

功課輔導班

於本中心內舉辦，服務對象為小學生，部份學生需接受託管服務，服務時間為學校下課後。此外，功課輔導服務亦外展到方樹福堂基金方樹泉小學，大約有一百人使用服務。

區本計劃

由教育統籌局資助，為五旬節于良發小學的清貧學生提供課後支援服務，內容包括：功課輔導服務、學習技巧訓練及軍訓歷奇訓練。

假期託管服務

中心於復活節假期、聖誕節假期及暑假間為區內幼稚園及初小學生提供半日及全日制

此外，本中心非常重視推行福音工作，有關本年的工作概況如下：

擴大接觸面

現時，中心於平日

成人學習課程

於本中心內舉辦多個課程，務對象主要為成人，設有興趣課程及實用課程兩類，服務時間





上午以較相宜的價錢為成人舉辦的課程，藉此與區內更多居民建立關係，擴大教會傳音的網絡。此外，亦透過派發宣傳品及透過職員的人際關係向服務使用者介紹信仰。

信仰小組

中心職員聯同教會

姊妹舉辦「傾出彩虹動力網」及「週五破冰船」小組，對象為區內婦女及幼兒學校之家長，並從中進行佈道及栽培工作。於九月份中心職員再聯同教會姊妹及中心義工開辦「茶餐聽小組」，主要跟進中心過去舉辦理髮服務所接觸到的長者。

福音活動

中心曾舉辦福音美容班，邀請基督徒導師從教授美容知識中分享信仰，當中有未信主的區內婦女及幼兒學校之家長一同參加。此外，亦在每年的暑期活動閉幕典禮中加插福音訊息。

未來展望

中心將會加強服務監管，參與制訂課程，招聘高質素導師，廣納服務使用者意見，開辦更多不同種類的課程，增加更多合作伙伴，以提升服務質素。而福音工作方面，中心會加強與恩光堂聯繫，期望動員更多弟兄姊妹支援在中心舉行的各個信仰小組，更嘗試透過其他堂會招募基督徒導師，透過中心服務服侍社區。中心亦將為本區中學生申請基金提供補習服務，以協助教會開展青少年事工，同時亦會於幼兒課程引入品格教育，並安排中心職員作導師以促進與家長溝通，以增加福音接觸面。此外，中心亦會申請基金舉辦新穎活動，以吸引更多長者參與團契以認識信仰，並邀請家長藉義務工作接觸教會。 ■

服務統計

會員人數	偶到服務	諮詢服務	開放節數
882人	11,738人次	4,752人次	594節
服務類別	活動次數	服務人次	
託管服務	566	3,011	
功課輔導	664	21,246	
個別約談	210	210	
青少年成長及培育活動	33	1,507	
兒童教育課程	827	5,539	
兒童興趣課程	931	5,668	
社區活動	6	685	
家長教育課程	250	1,891	
家長興趣課程	353	3,934	
家庭活動	1	50	
圖書閣服務	594	752	
義工服務	66	1,140	
合共服務	4,501	45,633	

香港宣教會學校服務隊

專業團隊·精益求精·全方位配合

背景及發展歷程

香港宣教會學校服務隊之前身為「香港宣教會白普理上水家庭中心——學校服務部」，由2000年開始已為北區及本港各區學校提供各項支援及發展性服務因應服務的發展及機的架構組，由2000年9月1日起，成功申請為一獨立註冊的服務單位，希望能更

服務概況

學校服務隊除有著富經驗的社工團隊支援學校的各種基要服務外，更會因應老師、家長和學生的獨特需要，另行設計相應的服務，以助學校及學生的發展和成長。過往一年，我們結合醫護及社工的元素，支援了學校前往新加坡、北京、澳門等地的遊學團。

專注地及更靈活地為本港中、小學及幼稚園提供多元化的支援及輔助服務。

初期，服務隊主要為支援學校教育的需要，提供全方位學生輔導服務、成長的天空（小學）計劃、學生課餘成長活動、家長教育及教師支援等服務。及後，因應全人教育的

需要，服務隊更開辦學童特殊教育支援服務、地區為本小學支援計劃、境外及境內遊歷學習支援活動。今年度，因配合影視及娛樂處的安排，為全港中、小學舉行多場「推廣過濾軟件使用」活動，教育家長對子女上網問題的處理。

除此以外，更獲禁毒基金的贊助，推行「掃毒小先鋒」計劃，宣傳不要服食危害精神毒品的訊息。希望能提升北區的中、小學生，建立健康及正確的生活態度。未來，更著意為有特殊教育需要的兒童，設計和提供各類輔助服務，使有需要的學童能融入正常的學習生活當中。



協作學校 ▶



香港宣教會學校服務隊

專業團隊·精益求精·全方位配合

總結

隨著區內學校結構轉變，我們的駐校數目減少了，但卻使我們有較多的空間回應學校的其他需要，使學校服務隊的服務變得更多元化和廣及全港各區。而我們的境外遊學服務，更不單是帶領學童跑出香港，也接待了國外學校到訪，成為融和國際學生交流的推動者。

統計摘要

服務項目	服務學校數目	提供服務日數/次數	接受服務人次
全方位學生輔導服務	5	589	128,178
成長的天空學生輔導計劃	14	352	6,336
特殊教育及新來港學童支援服務	7	450	4,714
地區為本小學支援計劃	10	39,662	34,867
課餘活動及學生成長發展	5	10	1,918
駐幼稚園社工服務	1	60	500
境外遊學支援服務	4	6	712
家長教育及教師支援	18	327	12,172
推廣過濾軟件使用計劃	63	80	3,432
合共服務	—	41,536	192,829



香港宣教會學校服務隊

專業團隊·精益求精·全方位配合



香港宣教會恩霖社區服務中心

品格人生 · 開心工程 · 打造積極人生

背景及發展歷程

恩霖社區服務中心在2009年5月於上水清河邨設立，由恩霖堂所承辦及管理。因關心上水清河邨「一個新落成及入伙的公共屋邨」的服務需求，遂把原先在彩園邨「白普理上水家庭中心」的兒童及家長服務團隊抽調出來成立此以自負盈虧方式營運的中心。

我們的服務方向

- ▶ 推動鄰舍守望精神，發展「居民網絡及支援服務」
- ▶ 提升家庭抗逆能力和開心的生活質素，設立「家庭資源及支援服務」
- ▶ 增強親子功能及和諧的家庭生活，推行多元化的「家庭生活及親子教育服務」
- ▶ 強化生命韌力和積極生活的動力，提供「生命及靈智教育服務」
- ▶ 鼓勵老有所為和長幼共融的生活，推展「長者資源及支援服務」

服務概況

教養孩童，使他走當行的道，就是到老他也不偏離（箴言 22:6）。

中心在08年年中開始投入服務時，便著意針對區內最大的年齡群——兒童，提供多元化的暑期活動和各類興趣與成長小組。及後，更開展了為期半年的「品格人生」系列，以家庭生活教育的手法，結合聖經的教導，透過系列性的講座、小組和家庭關顧等活動，由

房間，開展各項暑期活動和由恩霖堂推行的「短宣」活動。由於邨內兒童及年輕家庭居多，故在十一月，中心完成裝修後，便率先開展了為期半年的「品格人生」家庭及生命教育計劃，和以倡導親子閱讀為主的「書包圖書館」服務，希望能幫助區內居民建立更和諧及愉快的家庭生活。

未來展望

中心一直以「友善家庭」、「睦鄰社區」為服務的目標，並期望居民能生活在一互助互愛的生活環境。在

未來三年，中心得社區投資共享基金的支持，撥款推動一項名為「開心工程@清河」的計劃。期望透過「社區

關懷合作社」的設立，能組織居民建立不同的互助網絡，成為一個能自力更生，友善互愛的社區。

總結

雖然母機構在區內提供服務已有十多年的時間，但畢竟在一個全新的屋邨服侍一群全新的居民，實是需要一段時間的摸索和適應的。幸賴得到各方團體和政府部門的幫助，雖只有大半年的時間，便能開展多項具特色和有意義的服務，與居民的認識和關係也日益加深了。

統計摘要

個人會員人數	偶到服務	諮詢服務	開放節數
472人	5,640人次	9,024人次	410節
服務類別	活動次數	服務人次	
課餘託管服務	141	5,579	
幼兒親子活動	49	411	
兒童發展及成人興趣小組	265	1,779	
家庭及社區教育活動	37	1,054	
靈智及生命教育活動	11	268	
合共服務	503次	9,091人次	





2008-2009
ANNUAL REPORT



BACKGROUND

Hong Kong Evangelical Church (HKEC for short) is a Christian Church. Being Engaged in missionary outreach in Hong Kong since 1954, it has Established up more than 19 churches in Hong Kong.

Besides missionary Outreach and establishing churches, HKEC expresses Christ's love and care towards human kinds through social services. From 1950s, it established School, study centers, elderly centers and self-financed integrated family service center to serve the people in need in the community.

In order to emphasize the community care and enhance the recognition of its social services, on 28 Feb 1995, Hong Kong Evangelical Church Social Service Limited (HKECSS for short) incorporated under the Companies Ordinance and granted tax exemption under Section 88 of the Inland Revenue Ordinance to be a charitable organization. HKECSS is a corporate body to assist development of various social services. ■

MISSION

Follow Jesus Christ's example to preach the gospel and to serve people by providing social services of high quality and combines the gospel for the needs of individuals, families and community. ■

CHAIRMAN'S FOREWORD



On 4th January 2009, Hong Kong Evangelical Church Social Service Department is set up through the agreement in Hong Kong Evangelical Church's (HKEC) Special General Meeting. It is aimed to enhance the Social Welfare service development and affirm the role and value of Social Service Limited in HKEC. Obviously, the governance of each service unit was wholly consigned to "Hong Kong Evangelical Church Social Service Limited"(HKECSS) by HKEC.

It benefits greatly to the future development of HKECSS politically, it provides us freedom and flexibility on the strategy of social service development. We bring more blessing and hope to the needy in the society that harmony with the mission of HKEC : to serve the society with the love of God so that the people whom we serve have a holistic development psychologically, physically, intellectually and spiritually.

In the future of development, we provide high quality services and care to sustain our fine tradition. We have to put more effort on our organization governance and perform the best with the commitment between HKEC, our Lord and us. In cope with the different discussion and eager demands in the society, we have to consider and pray seriously for courage and wisdom to our Lord, Jesus Christ. We have to plan for long-range development to feedback the society with your support. May God be glorified. ■

Chairman
Mr Man Chor Kwan

SERVICES REPORT

OUR BELIEF

Follow Jesus Christ's example to preach the gospel and to serve needy people, whoever rich or poor by providing them supports and care. Through self financed bases, we carry out variety of Social Service for the stakeholder to experience harmony living with self help, resources sharing and treats.

OUR ACHIEVEMENT

In 2008-2009, our total income reached twenty one million Hong Kong dollars from service charges, government subsidiaries, community chest and individual donations. We held 116,748 activities and service to 510,999 beneficiaries. As a young and small-scaled organization, we made such an achievement with limited and unstable resources. We do not hesitate to thank our team of generous, flexible and innovative colleagues, our donors, advisor and helpful organization in the society.

OUR SIGNIFICANT

Not only the increase in service number and economic, but also our service coverage is expanded to Hong Kong Island, Kowloon and Island this year. We broke through the traditional belief; we cooperated with St James Settlement and carried out Funeral Navigation Service to encourage everyone to face death with a positive attitude, to reduce ones' fear of the topic. Besides, we promote healthy living style with the cooperation with North District Citizenship Education Committee, Schools, Shops, private residential and different organization to hold "North District Walking day" for near thousand participants, which is the largest scale walking campaign in North District.

OUR DEVELOPMENT



In mid of 2008, HKEC Yan Lam Community Service Center is established by HKECSS in response to the newly developed community's demand. We hope our new unit able to provide diverse service to the ever-changing community and population. We hope we are able to facilitate a harmonious society with our variety of service and coordination of stakeholders. Meanwhile, a newly developing neighborhood center will be set up in Tai Yuen Estate, TaiPo in late of 2009, to spread the Jesus' love and care to needy people in different district. ■

Executive Secretary
Lui Hing Chung, MH

LIST OF DIRECTORS
(at 31st March 2009)

CHAIRPERSON

Mr Man Chor Kwan

TREASURER

Mr Chan Siu Keung

SECRETARY

Rev Chan Kam Lin

DIRECTORS

Rev Chan Yu Sang, Mr Yip Po Yin,
Mr Lee Ko Keung

COORDINATION OFFICE STAFF

Mr Lui Hing Chung, MH
(Executive Secretary)

Ms Chu Chi Mei (Executive Officer)

HONOURS ADVISOR

James, KS To

Michael, KC Lai, JP, MH



LIST OF MANAGEMENT BOARD MEMBERS
(at 31st March 2009)

HKEC BRADBURY SHEUNG SHUI FAMILY CENTRE/

INTEGRATED HOME CARE SERVICES TEAM/

SCHOOL SERVICES TEAM/

YAN LAM COMMUNITY SERVICE CENTRE

CHAIRPERSON

Rev Chan Yu Sang (Centre Director)

MEMBERS

Mr Yeung Chi Kong, Ms Lee Pui Kwan

Mr Cheung Kit, Ms Sin Ka Wai

OBSERVERS

Mr Lui Hing Hung (Supervisor)

Ms Chu Chi Mei (Executive Officer)



FANLING FAMILY CENTRE

CHAIRPERSON

Rev Chan Kam Lin (Centre Director)

MEMBERS

Mr Yeung Wai Yip, Mr Chan Wing Tai,

Mr Tse Tu Fu, Mr Chan Siu Keung

OBSERVERS

Ms Yung Ngar Wan (Centre-in-charge)

HKEC TAI HING BRADBURY ELDERLY CENTRE

CHAIRPERSON

Mr Man Chor Kwan (Centre Director)

MEMBERS

Mr Lee Ko Keung, Mr Wan Chun Dong

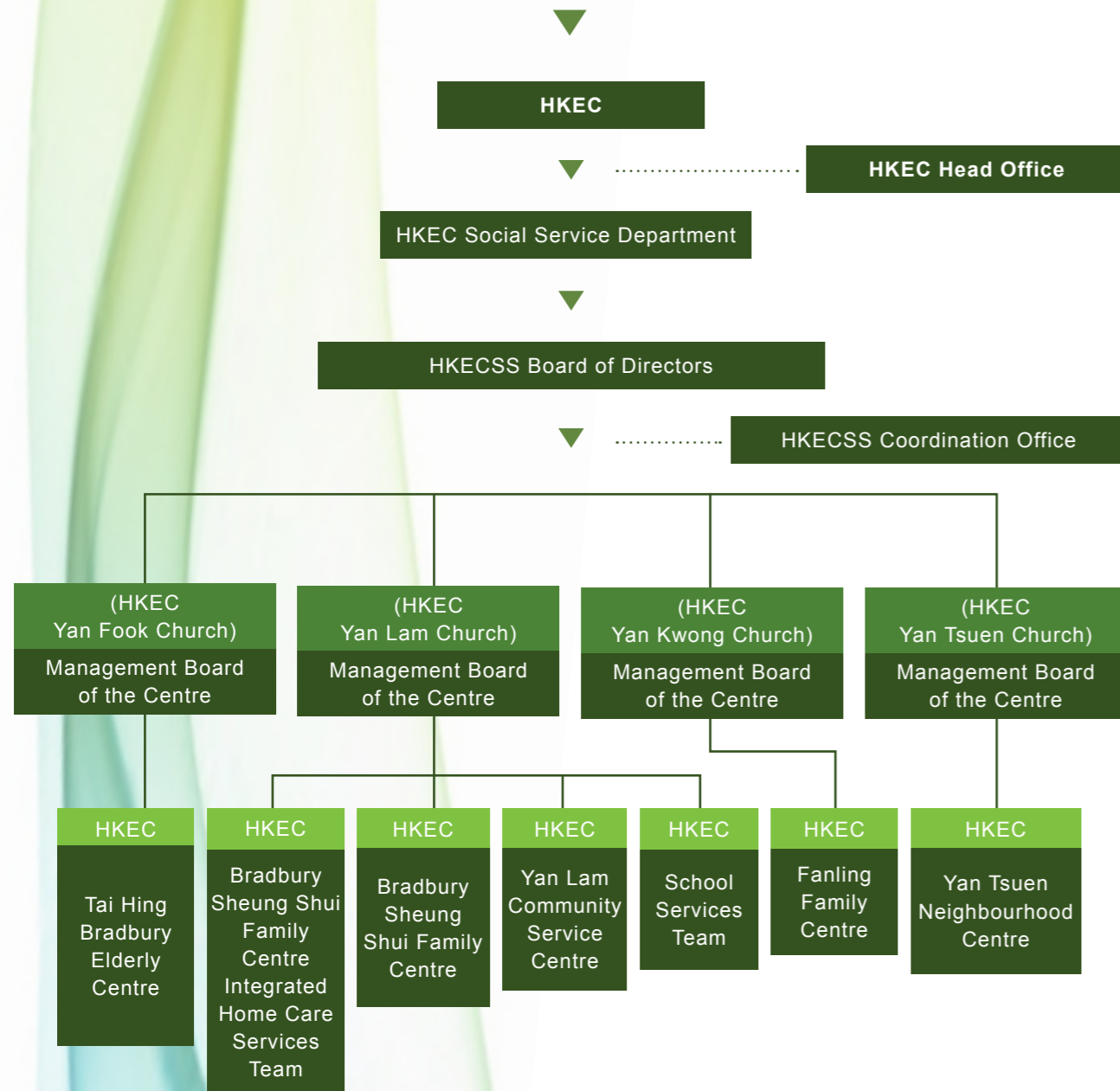
Ms Chan Chu Siu Han, Mr Chan Pei Shun

Ms Lau Yuen Na

OBSERVERS

Ms Yip Yin (Centre-in-charge)

ORGANIZATION CHART



MANPOWER

	Coordination Office	Tai Hing Bradbury Elderly Centre	Bradbury Sheung Shui Family Centre	Integrated Home Care Services Team	Fanling Family Centre	School Services Team	Yan Lam Community Service Centre	Sub-total
▶ Social Worker Officer	0.1	0	0.2	0.5	0	0.1	0.1	1
▶ Assistant Social Worker Officer	0	0	1	2	1	5	1	10
▶ Assistant Social Worker	0	2	1	2	0	6	3	14
▶ Registered nurse	0	0	0.2	0.8	0	0	0	1
▶ Executive Officer	0.2	0	0.3	0.5	0	0	0	1
▶ Centre Secretary (Admin)	0	0.5	1	2	1	0	1	5.5
▶ Centre Secretary (Programs)	0	1	2	0	2	1	1	7
▶ Program Assistant	0	1	3.5	1.5	0	1	3	10
▶ Helper (Home Care)	0	0	2	12	0	0	0	14
▶ Helper (Driver)	0	0	0	2	0	0	0	2
▶ Helper (Cook)	0	0	0	3	0	0	0	3
▶ Helper (Affairs)	0	1	0	1	1	0	0.5	3.5
▶ Total Manpower	0.3	5.5	11.2	27.3	5	13.1	9.6	72

OUR SERVICES

HKEC TAI HING BRADBURY ELDERLY CENTRE

BACKGROUND AND DEVELOPMENT

Established in Nov of 1982 in Tai Hing Estate, Tuen Mun, the Centre is the first social service unit of HKEC. Center follows

Jesus Christ's love, provide comprehensive service to the elderly and enhance positive aging. Furthermore, we provide religious,

psychological and physical supportive and developmental service for the needs of individuals and families.

OUR SERVICES

- ▶ Social and recreation development Service
- ▶ Health Support Service
- ▶ Counseling and Referral Service
- ▶ Education and development Groups
- ▶ Application of Elderly Concessions Service
- ▶ Application of "the Personal Emergency Link Service"

By the grace of God, China held a successful "Olympics Games" in 2008 and showed the ability and vitality to the World. Fortunately, Hong Kong can be one of the Competition City which held "Olympic equestrian sports" in such unique circumstance. In view of this, we held a series of Olympic related activities to provide opportunity for the elderly to learn various knowledge and get closer to the society. Those are

Olympic prelude (奧運前奏) Horse Riding Day (開心騎馬仔) Olympic Volunteer (奧運義工隊) all enhanced the elderly to participate in the world grand occasion.

In 2008/2009, we provided comprehensive activities and groups for the elderly to put their practical abilities to good use and develop their self confidence and social network. : Couple's Tea (夫婦茶聚), Mother's Day

and Father's Day s' Fun Day (父母親節遊樂日), Hair Cut Activities (剪髮大行動), Ching Ying Street Visit (百年禁區中英街一天遊), Golden Oldies encore (懷舊金曲齊安歌), Carer Team (關懷大使), Health Talk (健康常識講座), Volunteer services team (愛心服務隊). Besides, we had a new and innovative concept for the elderly that they can have chance to play musical equipment ▶



in their latter part of their life, so obtained sponsorship from HSBC Foundation and bought a set of hand bell for the elderly to learn and play.

This year, we partnered with St James Settlement and held a series of "Life and death education" program to the

elderly. It is an innovation Funeral Navigation Service providing chance for the elderly to prepare and plan for their own funeral, to reduce of the fear of death and confront positively. We held talks (後顧無憂講座) and trips (後顧無憂自遊行) for the

elderly to visit necropolis, coffin and shroud shop and Garden Burial, we let them study the kinds and price to do their own budget. After the program, the participants were feedback positively and welcome to discuss that sad and critical issue in their life.

CONCLUSION

This year was a year full of God's grace and joyful; we got good use of community resources; we obtained several of support and involvement to provide comprehensive service to the elderly and enhance the cooperation with other NGOs in the district. It helped to provide chances for the elderly to bring their talent into full play and contribute to the society. ■

STATISTICS OF SERVICES

		Number of Members	Walk-in Services (Person Times)	Opening Session (Sessions)
		735	34,060	540
GROUP	Services Item	Number of Service (Times)	Quantity of Service (Person Times)	
	Educational/ Developmental Group	323	11,727	
	Social/ Recreation Activities	152	3,283	
	Interest Group	854	11,601	
	Servicing	120	1,496	
Activity	Social Activities	42	2,165	
	Outings	17	939	
	Cultural/ Festive Activities	11	1,243	
	Health Promoting Activities/ Talks	79	4,054	
	Voluntary Services/ Visiting	3	253	
	Others	8	2,073	
	Lunch Gathering	205	4,105	
	Individual Service/ Enquiry	12	4,370	
	Case Counseling and referral	-	26	
	Total		1,826	47,335

HKEC BRADBURY SHEUNG SHUI FAMILY CENTRE

BACKGROUND AND DEVELOPMENT

Established in March 1991 in Choi Yuen Estate, Sheung Shui, Bradbury Sheung Shui Family Centre is the first self-financed integrated service family Centre of HKEC. Before 1994, it mainly provided after school care service and parent education activities. In 1994 and 1998, it combined 2 government- subvented home help teams, which were transformed into and integrated "Home Care Services team" in 2004. With such moves, the centre has become a more comprehensive and sizeable service provider. With the community

change and service development, in Sep of 2007, the well developed school services Department is separated and transformed into "School Services Team" as another single self-financed Unit to provide comprehensive service to Local School in Hong Kong.

Afterward, center applied and established another self-financed service unit to concern and response to the needy new public estate in North District-- HKEC Yan Lam Community Service Centre. In July of 2008, the child and parents service Team

in our ordinary center is transferred together to the new center in order to support the service development in Ching Ho Estate.

OVERVIEW

Following the two years service restructuring and community population changing, Bradbury Sheung Shui Family Center enhances the development of adult and elderly service; we strive to construct a harmony and healthy community.

In response to the ever-changing community and population, we



explored and developed various kinds of pioneer project and resources with our penetrative senses in these 19 years. With God's Grace we expanded our scale and service scope continuously and without scarcity. In 2007, our School Services Department is separated and registered as "School Services Team". Likewise, we involved and assisted the institution of "Yan Lam Community Service Centre" in this year (2008/2009). Although, our scale is reduced two of third with the two new units set up, we insist our innovative guiding principle to explore more different kinds of service to response to the community needs continuously.

In 2008/2009, we provided after-school care services, children development and parenting activities, family and community programs, community health promotion activities, rural services, elderly social development activities and home care service



with the provision of children-oriented and family-based community services. Although, our manpower is reduced, we maintained 722 opening hours and provided enquiry services to 25,992 person times. Besides, we held 9,828 times services and activities, provide supportive and



developmental services to 65,428 person times of individuals and groups.

In the past year, we maintain close relationship with hundreds elderly in 9 rural villages. We provided updated health information and recreation activities to the elderly and provide them opportunities to explore the community and experience the vitality and warmth from the society. In the meanwhile, we obtained the sponsorship from "Community Investment and Inclusion Fund" and held (城鄉長幼互聯網) scheme which finished successfully in this year, we successfully established the network between rural and town; youngsters and elders. Except facilitated the

residence of rural to cherish and discover their history and things in their home area, we developed series of tour and activities.

Although, our "children and parents services team is moved to Yan Lam Community Service

Centre, we maintained our Pre-scholar services (幼兒樂 playgroup) to 80 pairs of kids and parent weekly. We share and teach parenting to the participants, we provide social life for the pre-scholars to experience and learn as well, it is benefit for their psychological and social development.

With the sponsor from "Health and promotion Fund" by the Food and Health Bureau, we held walking scheme to promote healthy habit-Walking daily. We decided series of walking trail and partnered over 10 shops, schools and private residential in the district to launch the scheme and assist participant to develop their walking

habit. We held a North District Walking Day for thousands participants

with "Committee on the promotion of Civilization in North District" through

the tri-partite cooperation of the Government, community and business.

FUTURE DEVELOPMENT

In the coming future, we will emphasis our adult and elderly service in response to the demand of aging community. In 2009, we obtained funding sponsor from elderly commission for a two-year basis elderly care scheme. We promote Prevention and Handling of Elder Abuse to arise the concern on elderly safe. Hopefully, we can develop a healthy and harmony community to follow Jesus Christ's Love by the different kinds of services. ■

STATISTICS OF SERVICES

Number of Members		Walk-in Services (Person Times)	Enquiries (Person Times)	Opening Session (Sessions)
Individuals (Persons)	Family (Persons)			
304	173	10,830	15,162	722

Services Item	Number of Service (Times)	Quantity of Service (Person Times)
After-school Care	202	7,699
Early Childhood and Family Activities	119	5,019
Children Development and Adult Interest Group	462	5,652
Family and Community Education Activities	81	2,393
Community Health Services	211	12,897
Rural Services	385	10,927
Elderly Social Development Activities	428	9,158
Home Care Services	7,754	7,754
CIIF Projects	186	3,929
Total	9,828	65,428



HKEC BRADBURY SHEUNG SHUI FAMILY CENTRE INTEGRATED HOME CARE SERVICES TEAM

BACKGROUND AND DEVELOPMENT

Integrated Home Care Services Team is a government-subsidized service team of HKEC Bradbury Sheung Shui Family Center. In response to the diversity community demands, in 1994, the first Home Help team is set up at Tai Ping Estate in Sheung Shui with government subsidiaries for providing livelihood supportive service to the residence. In Aug 1998, the second Home Help team is set up to response the demanding and ever-changing community. Subsequently, as the demand of elderly care was multiplied expanding, we combined two home services team, which were transformed into

an integrated home care services team with Government subsidiaries in April 1994 and renamed "HKEC Bradbury Sheung Shui Family Centre Integrated Home Care Services Team". We station at Choi Yuen Estate in Sheung Shui as our headquarters

and correspondence address in order to integrate with other service and convenience to Residence. Daily Operation is stationed at Tai Ping Estate in Sheung Shui simultaneously to provide convenient and comprehensive service to the beneficiaries.



OBJECTIVE

Integrated Home Care Service Team is one kind of community support services providing a wide range of care and services to the elders,

the disabled, individuals and families with social need, so as to actualize the concepts of "ageing in place" and continuum of care". We assist the

development of social, physical and religious together to reinforce and support the necessary families and individuals for their daily care.

BENEFICIARIES

- ▶ Lack of care: elderly, frail, disable, Chronic Illness, ex-mentally ill persons and lack of care...etc.
- ▶ Hospital or welfare organization existing clients who need escort service between home and hospital/organization
- ▶ Cases referral by registered social workers
- ▶ Frail Cases (Assessed by Standardized Case Need Assessment Management Office)

OUR SCOPE OF SERVICES

- ▶ General Household / Domestic duties
- ▶ Personal Care
- ▶ Provision of Meal (Meal delivery, Preparation of meal)
- ▶ Laundry
- ▶ Purchase and Delivery of daily necessities
- ▶ Escort
- ▶ Child Care Services
- ▶ Social activities
- ▶ Nursing Care (Basic nursing care, special nursing care)
- ▶ Home safety and Health Assessment
- ▶ Rehabilitation exercise



SERVICE AREA



Rural Village ▶

- 29 Shek Wu Hui 26 Ng Uk Tsuen 19 Tsiu Keng 41 Muk Wu
- 28 Ying Pun 13 Kam Tsin 10 Ho Sheung Heung
- 31 Tin Ping Shan Village 56 Tong To Shan Tsuen 36 Wah Shan Tsuen
- 39 Hung Lung Hang 40 San Uk Ling 48 Tung Fung Au
- 12 Tsung Pak Long 5 Ma Tso Lung 22 Luk Mei Tsuen
- 37 Sham Shan 6 Fung Kong 7 Tong Kok 30 So Kwun Po
- 18 Chan Uk Po 51 Tung Lo Hang 45 Kau Liu Village 46 Tong Fong
- 55 Wang Hang 50 Tsung Yuen Ha 47 Kan Tau Wai 25 Ping Kong
- 17 Lin Tong Mei 16 Tong Kung Leng 3 Luohu 27 Kai Leng
- 9 Kwu Tung 38 Kong A Po 15 Hang Tau 58 Fu Tei Ao To
- 42 Chow Tin Tsuen 11 Yin Kong 57 Lin Ma Hang 14 Ngau Tei
- 32 Sheung Shui Village 33 Tin Kwong Po 8 Shek Tsai Leng
- 35 Cheung Po Tau 20 Cheung Lek 49 Chuk Yuen 52 Kong Yiu
- 43 Lo Shue Ling 54 Heung Yuen Wai 4 Tse Koo Hang
- 59 Shun Yee San Tsuen 1 Yuen Ling Chai 24 Tai Tau Leng
- 34 Sha Ling 44 Fung Wong Wu 23 Hakka Wai 21 Ki Lun Tsuen
- 53 Ha Heung Yuen 2 Nam Hang

Public Housing Estate ▶

- 2 Choi Yuen Estate
- 4 Tai Ping Estate
- 1 Choi Po Court
- 5 Sunningdale Garden
- 3 Yuk Po Court
- 6 Ching Ho Estate

Private Residential ▶

- 10 Glamour Garden 6 Venice Garden
- 7 Vienna Garden 9 Cheerful Park
- 8 Eden Garden 12 Camellia Court
- 5 Woodland Crest 3 Sheung Shui Center
- 13 Sheung Shui Town Center 11 Greenpark Villa
- 1 Lung Fung Garden 2 Metropole Plaza
- 4 Tsui Lai Garden



OVERVIEW

We thought the traditional service pattern is too late and passive that we provide support for elderly after problem caused. So, we collaborated with HKEC Bradbury Sheung Shui family Center to provide Psychological and Social activities besides the regular Home Care Service., such as, Elderly tea reception,

cooking and handicraft groups, tours, birthday parties, volunteer visit, hair dressing and festival programs. We facilitated the community network, self development and positive living effectively.

From the first Home care team, it is the 15th years for our service in North district. In the coming

year, not only maintain the existing number of service, we enhance our staff quality through variety of training in nursing skill, pathology knowledge, nutrition and health education. In meanwhile, we reinforce the network and support to the elderly and care taker, to promote happy and enthusiastic life.

CONCLUSION

This year, the number of applications for our elderly service and the dependence to social service is increased obviously with the problem of health and lack of living support. Our service number is reached more than three hundred cases with excess of over 50% to the agreement of government. Based on the care and love to the needy, we integrated the resources with our non-subsidized unit, to try our best to fulfill the entire applicant's needs. Besides, we reinforced the interest groups and outing activities for the senior citizen to explore the outside society and get rid of recluse life, increase their social and development in order to led a healthy elder life under the community care. ■

STATISTICS OF SERVICES

Type of Cases	Elderly	Disabled	Special Family Needs	Frail	Total
Quantity of Cases	315	28	25	10	378

Services Item	Quantity of Services (Times)	Number of Beneficiaries (Person Times)
Home Care Service	52,358	52,358
Nursing Service	6,165	6,165
Social Activities	31	954
Total	58,554	59,477



HKEC FANLING FAMILY CENTRE

BACKGROUND AND DEVELOPMENT

Established in May 1993 in Wah Ming Estate, Fanling Family Centre is the third social service center of HKEC, which

is also self-financed. We provides integrated after-school care and parent education services, community education activities,

family-based activities and resources service, volunteer development and training, Christian counseling and life education programme.



RETROSPECT

This year, we mainly provided the following services:

Children education program

We provided variety of After School, Saturday program and summer whole day program for infants to Primary School Students, such as parenting games, language literature, logical thinking, visual arts, Body movement and Music.



Adult Education Program

We provided both interest courses and practical courses to adult in the morning and evening daily.

Tutorial

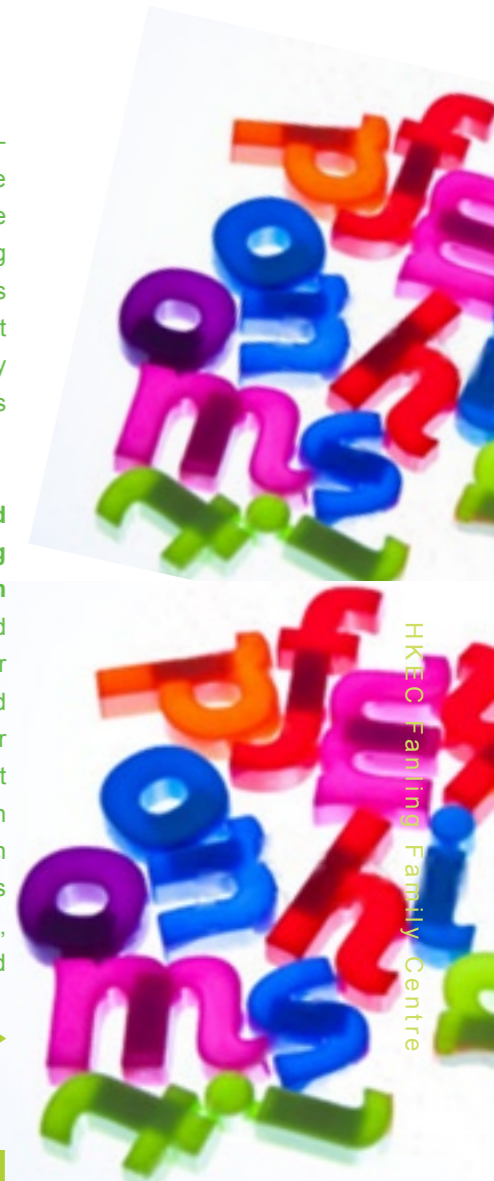
We committed in launching tutorial services to primary School students after School daily in our Centre and also Fong Shu Chuen Primary School with about 100 students.

Holiday- Care Service

Half-day and whole-day care holistic service were provided to the working parents during Easter Holiday, Christmas Holiday and summer. It helps to provide healthy Extra –curricular activities to students in leisure.

Community Based After School Learning and support Program

We provided Community Based After School Learning and support Program for Pentecostal Yu Leung Fat Primary School which funded by Education Bureau. Programs including: tutorial, learning skill training and adventure training.





Besides, our center attached importance to the implementation of gospel work, we provided:

Expand coverage

We provided adult courses for adult with lower prices to build up relationship with the residence and expand the gospel coverage network. We deliver collaterals and introduce gospel to the service user by our staffs.

Religious Group

Our Staffs cooperated with the church's ladies and carried out 「傾出彩虹動力網」 and 「週五破冰船」 groups for the women and kindergarten's parents to promote gospel and religious development works. Besides, in September 2008, our Church's ladies cooperated with our center volunteer carried out 「茶餐聽」 groups to

follow the adult service use who joined our hairdressing service in the past.

Gospel Activities

We held gospel facial class and invited Christian tutor to share religious through facial knowledge to women and kindergarten's parents. Otherwise, we input the gospel message into our summer finale program to expand the spreading effectively.

LOOKING FORWARD

We will reinforce our service management and enhance our quality of service by participating in the course design, recruitment of better quality tutor, hear and accept opinions and provide variety kinds of courses, and build up cooperation network.

For the gospel work, we enhance the coordination with Yan Kwong Church, to mobilize more church members to support the religious group in center. We will also recruit Christian as our tutor, to serve the community through our service. Besides, we will apply funding to support secondary school student tutorial and explore youth services for the church.

We lead character education in our early child education; we expand our gospel coverage by facilitate the communications between our staff and parents.

At last but not least, we will apply funding for innovative service to carry out fellowship for elderly to know gospel and invite parents to get in touch with church through volunteer service.

STATISTICS OF SERVICES

Number of Members	Walk-in Services (Person Times)	Enquiries (Person Times)	Opening Session (Sessions)
882	11,738	4,752	594

Services Item	Quantity of Services (Times)	Number of Beneficiaries (Person Times)
After School Care	566	3,011
Tuition	664	21,246
Counseling	210	210
Youth Development	33	1,507
Children Education	827	5,539
Children Interest Group	931	5,668
Community Program	6	685
Parenting	250	1,891
Parent Interest Group	353	3,934
Family Activities	1	50
Library Services	594	752
Volunteer Development	66	1,140
Total	4,501	45,633

HKEC SCHOOL SERVICES TEAM

BACKGROUND AND DEVELOPMENT

Hong Kong Evangelical Church School Services Team is one of the non-profit making services unit of HKECSS, formerly known as the "Hong Kong Evangelical Church Bradbury Sheung Shui Family Centre-School services Department". As early as 2000, HKECSSST has provided a self-financing basis service to secondary schools, primary schools and kindergartens with various kinds of supportive and developmental services, mainly supporting schools

in upgrading the quality of teaching, also promoting the interaction and harmony among students, teachers and community.

We mainly provided Comprehensive Student Guidance Service, Understanding Adolescent Project (Primary School), After School Programs, Parenting and teachers' supportive services to support the education needs in the early stage. Subsequently, in response to the needs of whole person education development, we developed special

Educational Needs Service, School based after school Learning and Support Programs and Local and outbound Study Tour Service. This year, we cooperate with Television and Entertainment Licensing Authority to hold numbers of "District Talk-cum-workshop for the Use of Filtering Software" Activities in Local Secondary and Primary School Subsidy Scheme for educating the parents to protect youngsters from being adversely affected by indecent and obscene information.



School List ▶



OVERVIEW

To assist the development of school and students, not only providing basic supportive services to School by our professional social workers team, we also provide flexible service to teachers, parents and student for their unique requirement with tailor-made service. In the past year, we collaborated with nursing and social work element and supported schools with carried out out-bound study tours to Singapore, Beijing and Macau.

Besides, we cooperated with Television and Entertainment Licensing Authority to hold numbers of "District Talk-cum workshop for the use of use of Filtering Software" activities in 60 local secondary and primary school in Hong Kong, Kowloon and New Territories to about 700 parents.

awareness on the harmful effects of drug abuse and the importance of staying away from drug. We promoted healthy living style and positive living to the secondary school and primary School students in north district.

In the future, we will put emphasis on the development of service to our Special Educational Needs Children. We will assist them to involve and adapt the normal education life by designing and providing supportive service

Other than providing School based support, we carried out "Pioneer of Beat Drugs" scheme which funded by Beat Drugs Fund to raise public



CONCLUSION

In response to the restructure of the School in the community, we reduced our number of stationing social work service. In the meanwhile, we increased more rooms to response to their alternative demands, and providing more holistic and diverse service to the school in different District. Besides, we provide study tour service not only bringing students outside Hong Kong, but also host oversea school to visit local School, becoming a media for international cultural exchange.

STATISTICS OF SERVICES

Services Item	Number of Beneficiaries School	Number of Service (Days/times)	Quantity of Beneficiaries
Comprehensive Student Guidance Service	5	589	128,178
Understanding Adolescent Project	14	352	6,336
Special Educational Needs and New Arrival Students Support Service	7	450	4,714
School-based After School Learning and Support Programs	10	39,662	34,867
After School and Students development Programs	5	10	1,918
Kindergarten stationing Guidance Service	1	60	500
Outbound Study Tour Service	4	6	712
Parenting and Teachers Support Program	18	327	12,172
"District Talk-cum-workshop for the Use of Filtering Software" Subsidy Scheme	63	80	3,432
Total	—	41,536	192,829



HKEC YAN LAM COMMUNITY SERVICE CENTRE



BACKGROUND AND DEVELOPMENT

Yan Lam Community Service Centre is set up at Ching Ho Estate in Sheung Shui in June of 2009 and managed by HKEC Yan Lam Church. In response to the services demand of the new-developing public housing estate, our child and parent department of Bradbury Sheung Shui Family Centre is separated and operate in self-finance bases in the new center.

"Friendly family" and "Harmonious community" are the direction of the center with comprehensive resources, support and developmental services. We provide new immigrant

support scheme(清河邨入伙支援計劃) initially in April of 2008 to assist the residence to get with the new environment, although we start our decoration project in mid of July of 2008. In July of 2008, we opened the center partially to the public and carried out series of summer program, Yan Lam Church launched Short-term Missions well. The populations of Children and youngsters family is relatively high in the estate, we launched a half year "character education" family program in Nov 2008 after the decoration project is

finished. Besides, we set up and provide "Book Bag Library" Service to promote the value of parents and teachers creating a ritual of reading aloud to their children, and enhance the harmony and joyful family life in the community.



OBJECTIVE

- ▶ To facilitate community social network and peer support to develop a harmony and healthy community
- ▶ To provide family resources and supportive service and enhance awareness of needy family at an early stage
- ▶ To facilitate Parenting and family education to increase the ability of "against adversity"
- ▶ To consolidate religious education and service to renew the quality of life and mental healthy
- ▶ To promote positive aging and Harmony of Inter-generational by providing Elderly resources and supportive Service

OVERVIEW

"Train up a child in the way he should go: and when he is old, he will not depart from it." THE PROVERBS 22:6 From mid of 2008, we put emphasis on the largest population in Ching Ho Estate- children, we provided variety kinds of Summer programs, interest classes and

developmental programs. Later on, we carried out a half year "Character education" family program with collaborated Family education skill and bible teaching to assist participant to explore the way of building family and children's character. We held series of talk, groups and family care...

etc activities by HKEC Yan Lam Church's members. We hope to build up families in the community with enthusiasm, conscientiousness, initiative, benevolent, merciful, modest, patient, generous, respectful, forgive, graceful and joy...etc characters.



FUTURE DEVELOPMENT

"Kindness family and good-neighborliness community" is our all while service objective, we hope to build a "helping and caring" living environment for the residents. In the

coming three years, we carry out a project "Happy Project @ Ching Ho" ("開心工程@清河") which funded by Community Investment and Inclusion Fund. We hope we can organize

the residents to build up variety of care network through the set up of "Community Care Co-op Club", and become a self-reliance and "helping and caring" community.

CONCLUSION

Although the founder unit (HKEC Bradbury Sheung Shui Family Centre) has provided service to the community in North district over 18 years, Ching Ho Estate is a newly district with new residence and demands. We need a period of time to grope and adapt in the new needy environment. With the support from other NGOs and government department, We have carried out variety of distinctive and significant service and reinforce the relationship and trust with the resident successfully. ■

STATISTICS OF SERVICES

Number of Members	Walk-in Services (Person Times)	Enquiries (Person Times)	Opening Session (Sessions)
472	5,640	9,024	410
Services Item	Quantity of Services (Times)	Number of Beneficiaries (Person Times)	
After School Care	141	5,579	
Early Childhood and Family Activities	49	411	
Children Development and Adult Interest Group	265	1,779	
Family and Community Education Activities	37	1,054	
Religious services and Life Education Activities	11	268	
Total	503	9,901	

收入及支出概覽

INCOME AND EXPENDITURE KEY FIGURES

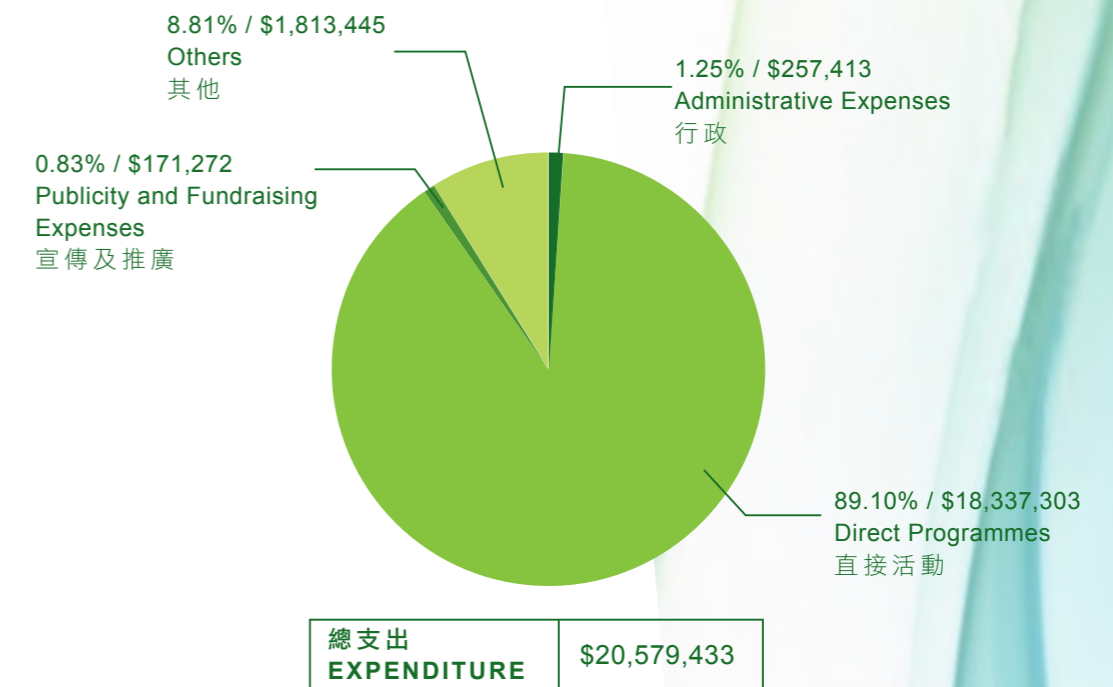
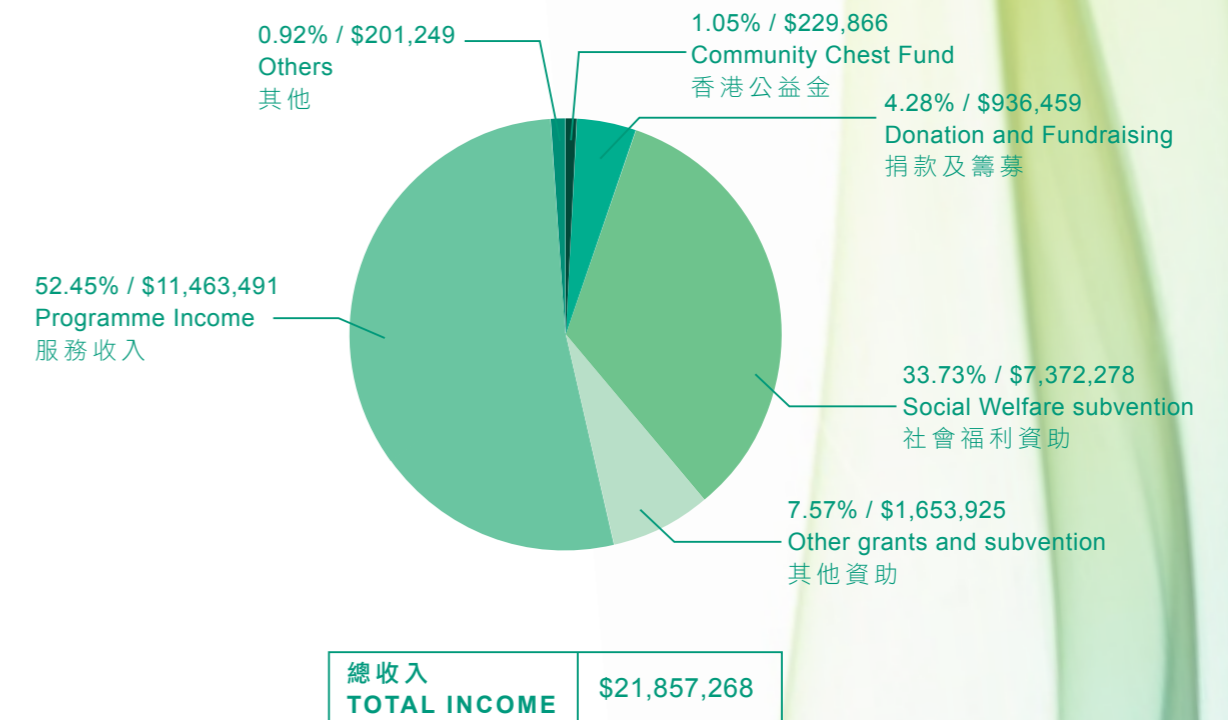


核數師報告

AUDITOR'S REPORT



收入及支出概覽
INCOME AND EXPENDITURE KEY FIGURES



核數師報告
AUDITOR'S REPORT

NG, SUEN, LAU C.P.A. LIMITED
Certified Public Accountants (Practising)

HONG KONG EVANGELICAL CHURCH SOCIAL SERVICE LIMITED
(Limited by Guarantee)

BALANCE SHEET

AS AT MARCH 31, 2009
(Expressed in Hong Kong Dollars)

	Notes	2009	2008
NON-CURRENT ASSET			
Property, plant and equipment	6	1,546,296	739,990
CURRENT ASSETS			
Accounts receivable		1,088,798	1,857,759
Utility deposits and prepayment		499,689	104,852
Bank balances and cash		5,404,360	4,204,568
		6,992,847	6,167,179
CURRENT LIABILITIES			
Accounts payable and accruals		683,093	371,504
Receipt in advance		998,606	630,221
Deferred income	7	358,218	477,624
Loans from member churches	8	2,355,446	2,355,446
Bank overdraft		-	124,016
		4,395,363	3,958,811
NET CURRENT ASSETS		2,597,484	2,208,368
NET ASSETS		4,143,780	2,948,358

核數師報告
AUDITOR'S REPORT

NG, SUEN, LAU C.P.A. LIMITED
Certified Public Accountants (Practising)

HONG KONG EVANGELICAL CHURCH SOCIAL SERVICE LIMITED
(Limited by Guarantee)

BALANCE SHEET - CONTINUED

AS AT MARCH 31, 2009
(Expressed in Hong Kong Dollars)

	Notes	2009	2008
RESERVES			
General fund	9	963,280	246,239
Surplus reserve	10	3,057,448	2,579,067
Lottery fund block grant reserve	11	28,643	28,643
Reserve for future development	12	94,409	94,409
		4,143,780	2,948,358

The accompanying notes form an integral part of the financial statements.

The financial statements on pages 5 to 21 have been approved and authorised for issue by the Board of Directors and signed on its behalf by:


Director


Director

核數師報告
AUDITOR'S REPORT

NG, SUEN, LAU C.P.A. LIMITED
Certified Public Accountants (Practising)

HONG KONG EVANGELICAL CHURCH SOCIAL SERVICE LIMITED
(Limited by Guarantee)

INCOME AND EXPENDITURE ACCOUNT

FOR THE YEAR ENDED MARCH 31, 2009
(Expressed in Hong Kong Dollars)

	Notes	2009	2008
INCOME	14	21,857,268	22,333,921
EXPENDITURE			
Accounting fee		60,000	60,000
Activities and programme expenses		3,181,514	4,018,003
Advertising and promotion		52,899	87,202
Auditors' remuneration		59,039	49,507
Bank interest and charges		6,045	4,052
Books, newspaper and magazine		17,283	10,533
Cleaning expense		35,563	28,387
Course, day care and tutorial class expenses		1,728,538	1,387,739
Depreciation		559,403	267,262
Food		509,997	467,258
Insurance		4,871	70,301
Mandatory and ORSO contribution		676,573	638,878
Membership fee		4,000	4,000
Minor purchases, repair and maintenance		170,456	214,302
Motor vehicle expenses		117,099	98,922
Other service expenses		135,853	175,388
Postage		2,856	2,785
Printing and stationery		115,517	112,314
Professional fee		2,605	2,605
Rent and rates		736,848	558,237
Rural services expenses		44,488	55,219
Salaries		10,776,638	10,508,814
School project expenses		1,067,030	1,100,572
Service contract out		87,960	80,235
Staff welfare		21,288	25,165
Sundry expenses		92,250	91,818
Telephone and fax		46,719	40,381
Travelling		11,613	14,389
Utility expenses		254,488	249,624
		20,579,433	20,423,892
SURPLUS FOR THE YEAR	9	1,277,835	1,910,029

The accompanying notes form an integral part of the financial statements.

核數師報告
AUDITOR'S REPORT

INCOME	2009	2008
Activity income	2,922,089	2,968,078
Bank interest	8,648	73,616
Community Chest fund	229,866	224,606
Course, day care and tuition fee	2,701,289	2,438,666
Donation income	740,504	284,417
Fund raising income	195,955	152,763
Other grants and subvention	1,653,925	2,051,395
School project fee	4,046,042	5,450,088
Service income	1,794,071	1,715,057
Social welfare subvention	7,372,278	6,773,147
Subscription fee	53,817	44,473
Sundry income	138,784	157,615
	21,857,268	22,333,921

Notes 14

捐款回條

DONATION FORM

本機構為香港註冊慈善團體

We are an incorporated charitable organization in Hong Kong: IRD ref: 91/4135

本人/公司樂意支持貴會之社會服務，並捐助港幣
I / We would like to donate,

\$100 \$500 \$1,000 \$5,000

其他數目 Others (多少無拘) \$ _____

in support of HKECSS's social service, 予下列服務單位 and please distribute to the following service unit

(請在適用方格以 表示，並註明金額之分配) (Please tick the suitable box and state the proposed distribution):

- 機構整體發展 Agency Development \$ _____
- 大興白普理老人中心 Bradbury Tai Hing Elderly Centre \$ _____
- 白普理上水家庭中心 Bradbury Sheung Shui Family Centre \$ _____
- 綜合家居照顧服務隊 Integrated Home Care Service Team \$ _____
- 粉嶺家庭中心 Fanling Family Centre \$ _____
- 學校服務隊 School Services Team \$ _____
- 恩霖社區服務中心 Yan Lam Community Service Centre \$ _____
- 恩全鄰舍中心 Yan Tsuen Neighbourhood Centre \$ _____
- 其他服務發展用途 Other use of development \$ _____

捐款方法 (請在適用方格以 表示) METHODS OF DONATION

劃線支票 (抬頭請註明「香港宣教會社會服務處有限公司」
Please use crossed cheque payable to "Hong Kong Evangelical Church Social Service Limited"

直接將捐款存入本會戶口 - 香港上海匯豐銀行戶口: 561-0-016924
Transfer the amount to HKECSS's saving account at Hong Kong Bank
(account number: 561-0-016924)

聯絡資料 CONTACT INFORMATION

姓名 Name: _____ 先生 Mr / 小姐 Miss / 女士 Ms

聯絡電話 Tel: _____

電郵地址 Email address: _____

通訊地址 Correspondence Address: _____

備註 Remarks:

(1) 填妥表格後，請連同劃線支票或存款收據寄交：上水彩園郵彩麗樓地下29至40號 香港宣教會社會服務處有限公司收

Please complete form and post together with the crossed cheques, and/or ATM/ bank receipts to Hong Kong Evangelical Church Social Service Limited, 29-40, G/F Choi Lai House, CHoi Yuen Estate, Sheung Shui NT

(2) 此表格之個人資料除作上述用途外，亦會用以寄發本中心資料。如不擬收取，或需查詢/更改個人資料，請與各中心聯絡。

Your personal data provided in this form will be used for the above purpose. It may also be used for sending the Organization's publicity materials to you. If you do not wish to receive such material, or if you want to have access to or charge your personal data, please contact the units.

(3) 本會將寄回正式收據。捐款滿一百元，收據可作免稅之用。

Official receipt would be provided. Donations over \$HKD100 are tax-deductible.

服務單位通訊錄

SERVICES UNITS CONTACT

Coordination Office / 協調辦事處	Contact Person
29-40, G/F, Choi Lai House, Choi Yuen Estate, Sheung Shui, NT 上水彩園郵彩麗樓地下29至40號 Tel: 2670 2995 Fax: 2670 8985 Email: info@hkecss.org	Mr Lui Hing Chung (Executive Secretary) 呂慶忠先生 (執行秘書)

Tai Hing Bradbury Elderly Centre / 大興白普理老人中心	Contact Person
15-21, G./F., Hing Yiu House, Tai Hing Estate, Tuen Mun 屯門大興村興耀樓地下15-21號 Tel: 2465 7163 Fax: 2456 2825 Email: thelderly@hotmail.com	Ms Yip Yin (Centre In- Charge) 葉燕女士 (中心主任)

Bradbury Sheung Shui Family Centre / 白普理上水家庭中心	Contact Person
29-40, G/F, Choi Lai House, Choi Yuen Estate, Sheung Shui, NT 上水彩園郵彩麗樓地下29至40號 Tel: 2670 2995 Fax: 2670 8985 Email: sf@hkecss.org	Ms Tsang Yuk Ying (Centre In- Charge) 曾玉英女士 (中心主任)

Bradbury Sheung Shui Family Centre - Integrated Home Care Services Team / 白普理上水家庭中心綜合家居照顧服務隊	Contact Person
112-114, G./F Ching Ping House, Tai Ping Estate, Sheung Shui 上水太平邨平靜樓地下 Tel: 2672 4160 Fax: 2672 9640 Email: it@hkecss.org	Ms Tsang Yuk Ying (Unit In- Charge) 曾玉英女士 (單位主任)

Fanling Family Centre / 粉嶺家庭中心	Contact Person
3, G/F, Tim Ming House, Wah Ming Estate, Fanling 粉嶺華明邨添明樓地下3號 Tel: 2676 4010 Fax: 2677 9252 Email: hkecykc@biznetvigator.com	Ms Yung Ngar Wan (Centre In- Charge) 翁雅韻女士 (中心主任)

School Services Team / 學校服務隊	Contact Person
Wing B & C, G/F Ching Ping House, Ching Ho Estate, Sheung Shui 上水清河邨清平樓地下B翼及C翼 Tel: 2672 4771 Fax: 2242 2522 Email: st@hkecss.org	Mr Yip Kin Chung (Unit In-Charge) 葉建忠先生 (單位主任)

Yan Lam Community Service Center / 恩霖社區服務中心	Contact Person
Wing B & C, G/F Ching Ping House, Ching Ho Estate, Sheung Shui 上水清河邨清平樓地下B翼及C翼 Tel: 2672 4771 Fax: 2242 2522 Email: yl@hkecss.org	Ms Cheung Yuen Siu (Centre In-Charge) 張婉笑女士 (中心主任)



香港宣教會社會服務處有限公司
Hong Kong Evangelical Church
Social Service Limited

新界上水彩園邨彩麗樓地下29-40號
29-40, G/F Choi Lai House, Choi Yuen Estate,
Sheung Shui NT

電話: 2670 2995 傳真: 2670 8985
網址: www.hkecss.org
電郵: info@hkecss.org

社聯

