

2009-2010 Annual Report

年報 2009-2010 年度報告



香港宣教會社會服務處有限公司
Hong Kong Evangelical Church Social Service Limited



A member agency of the community Chest



Table of Content

目錄

01

宗旨	Mission	02
背景	Background	03
主席的話	Chairman's Foreword	04-05
董事名錄	List of Directors	06
管理委員名錄	List of Management Board Members	07-09
架構圖	Organization Chart	10
人力編制	Manpower	11
工作匯報	Services Report	12-13
服務點滴	Highlights	14-22
各中心簡介及統計摘要	Our Service Units and Statistics	23-46
收入及支出概覽	Income and Expenditure Key Figures	47-49
財務摘要	Financial Review	50-54
鳴謝	Acknowledgement	55-57
捐款回條	Donation Form	58-59
服務單位通訊錄	Service Units Contact	60-61



Mission

宗旨



實踐耶穌基督傳揚福音和服務人群的精神，為個人、家庭及社區的需要，提供優質及結合福音的社會服務

Follow Jesus Christ's example to preach the gospel and to serve people by providing social services of high quality and combines the gospel for the needs of individuals, families and community.



Background

背景

香港宣教會為一基督教會，由一九五四年開始在香港區發展福音工作，至今在港建立了十多間堂會。香港宣教會除積極傳揚福音和建立教會外，也透過社會服務具體地表達基督對人的愛和關懷；由五十年代至今，先後興辦了學校、自修室、老人中心、自負盈虧的綜合家庭服務中心及社區中心，以服務社區上有需要之人仕。

香港宣教會為增強對社會服務之關注和社會大眾的認受性，遂於九五年二月廿八日向公司註冊署及稅局申請成立非牟利慈善團體「香港宣教會社會服務處有限公司」，並獲法人地位，全面輔助各項社會服務的發展。

Hong Kong Evangelical Church (HKEC for short) is a Christian Church. Being engaged in missionary outreach in Hong Kong since 1954, it has established up more than 12 churches in Hong Kong.

Besides missionary outreach and establishing churches, HKEC expresses Christ's love and care to human kinds through social services. From 1950s, it established school, study centers, elderly centers, self-financed integrated family service center and community centre to serve the people in need in the community.

In order to emphasize the community care and enhance the recognition of its social services, on 28 Feb 1995, Hong Kong Evangelical Church Social Service Limited (HKECSS for short) is incorporated under the Companies Ordinance granted tax exemption under Section 88 of the Inland Revenue Ordinance to be a charitable organization. HKECSS is a corporate body to assist development of various social services.

Chairman's Foreword

主席的話

香港宣教會於2009年1月4日正式通過成立社會服務部，並委任香港宣教會的教牧同工為部長負責該部的發展。從組織發展而言，香港宣教會不單承認和肯定社會服務於堂會宣教策略、實踐耶穌基督福音關愛世界均有相當價值與貢獻外；也認定社會服務能建構堂會與社群彼此了解和溝通的平台，讓更多人從各種活動中認識耶穌基督道成肉身的意義，也讓堂會更把握和了解社群的需要和掙扎。以致，堂會在宣講牧養和福音推廣的向度設定上，可以更具體地反思和計劃當下的事工和使命怎樣落實於社群中，叫每個人都能邁向整全的生命發展。我們相信這就是為福音而活的精神，也是香港宣教會整體所持守的精神。

香港宣教會的組織更新主要目的是讓社會服務處有更大的空間發展社會服務，使更多人能受惠我們的使命。因此，我們要再度思考的問題還不少，例如：

- 社會服務處怎樣揉合轄下各服務單位的經驗、專長和能力邁向更貼近社會需求和未來的發展，能與社會各階層、各機構、社會福利署、各社福界同事和教會衷誠合作。
- 我們怎樣回應香港本土的社會議題，例如：貧窮、青少年的成長導向、和諧家庭與睦鄰、長者的成長與關懷……
- 某層面而言，香港已是發展成熟的城市。因此，也培育了不少專才和有能之士。對我們而言，我們不能不問，我們有足夠的能力回應社會的需要和競爭的能力嗎？不是個別而言，而是我們整體的實力。

以上的反思，不在於我們的欠缺與不足的檢討，這方面我們可以從本處執行秘書呂慶忠先生的工作報告已相當詳盡讓公眾了解我們的努力和成果。我想，我們是還可以「恩上加恩，力上加力。」把我們已作的做得更好。因為，我們不僅是為了做好這份工，更因為，這就是我們的使命。

有一段耐人尋味的說話：

有許多人因為看見他在病人身上所行的神蹟，就跟隨他。

耶穌上了山，和門徒一同坐在那裡。那時猶太人的逾越節近了。

耶穌舉目看見許多人來，就對腓力說：「我們從哪裡買餅叫這些人吃呢？」

他說這話是要試驗腓力，他自己原知道要怎樣行。

我們相信祂已作成了，由我們去發現和履行。

約翰福音6:2-6

文楚君先生

Chairman's Foreword

主席的話

Hong Kong Evangelical Church on January 4, 2009 formally approved the establishment of the Department of Social Services, and the appointment of Hong Kong Evangelical Church's pastoral staff for the minister responsible for the development of the department. In the view of further development, the Hong Kong Evangelical Church is not only recognized and affirmed the contribution of providing social service for the gospel mission from the churches to the world, also identified social services able to build mutual understanding and communication platform among churches and community. So that more people learn the significance of the Incarnation of Jesus Christ from a variety of social activities and our churches able to grasp and understand the needs and struggles of the community. In Meanwhile, churches can be more specifically and dimensionally to reflect and plan the implementation of church pastoral and preaching gospel to the community, to assist everyone to develop a holistic living.

The main purpose of updating and revising our organization structure is to provide more rooms for the development of social services so that more people can benefit from our mission. Therefore, there are still numbers of problems we have to reflect for further development, for example:

- How does Social Services Limited compromise the various service units of its experience, expertise and ability to move closer to the social needs and future development. Also cooperate sincerely with all sectors of society, institutions, the Social Welfare Department, the welfare sector colleagues and the churches.
- How do we respond to local social issues in Hong Kong, such as poverty, young people-oriented, harmonious family and good-neighborliness, the growth of the elderly and care ...
- There are numbers of professionals and qualified individuals in Hong Kong, a mature city. Do we have sufficient ability to respond to the fast changing needs of society and competitiveness enough or not? Not individually, but our overall strength.

With the above reflection, it is not because of we are lack or lack of review; especially you can see what we have done in the past through our service report in the later pages. I think we can work better by "grace upon grace, from strength to strength." from the lord.. Because we do not only get the job done, but because it is our mission.

A thought-provoking talk:

And a great number of people went after him because they saw the signs which he did on those who were ill. Then Jesus went up the mountain and was seated there with his disciples. Now the Passover, a feast of the Jews, was near. Lifting up his eyes, Jesus saw a great number of people coming to where he was, and he said to Philip, "Where may we get bread for all these people?"

This he said, testing him: for he had no doubt what he himself would do. John 6:2-6

Mr Man Chor Kwan

List of Directors

(at 31 March 2010)
(截至2010年3月31日)

董事名錄

主席 CHAIRPERSON

文楚君先生 Mr Man Chor Kwan

司數 TREASURER

陳小強先生 Mr Chan Siu Keung (直至Till 5.2.2010)
葉寶言先生 Mr Yip Po Yin (由From 6.2.2010)

文書 SECRETARY

陳金蓮牧師 Rev Chan Kam Lin

董事 DIRECTORS

陳汝生牧師 Rev Chan Yu Sang
李高強先生 Mr Lee Ko Keung
曹嘉宥先生 Mr Tso Ka Yau (由From 5.2.2010)
麥麗嬋女士 Ms Mak Lai Sim (由From 30.7.2009)

協調辦事處同工 COORDINATION OFFICE STAFF

呂慶忠先生MH (執行秘書) Mr Lui Hing Chung, MH (Executive Secretary)
朱紫薇女士 行政主任 Ms Chu Chi Mei (Executive Officer)

名譽顧問 HONOURS ADVISOR

賴錦璋先生 MH Mr Michael, KC Lai MH ,JP
涂謹申議員 Mr James, KS To

List of Management Board Members

(at 31 March 2010)
(截至2010年3月31日)

管理委員名錄

大興白普理老人中心

HKEC Tai Hing Bradbury Elderly Centre

主席 CHAIRPERSON

文楚君先生 (中心總監)
Mr Man Chor Kwan (Centre Director)

委員 MEMBERS

李高強先生 Mr Lee Ko Keung
溫振東先生 Mr Wan Chun Dong
劉婉娜女士 Ms Lau Yuen Nd
朱少嫻女士 Ms Chu Siu Han
陳彼信先生 Mr Chan Pai Shun
黃柏南先生 Mr Chan Pak Nam

列席 OBSERVERS

葉 燕女士 (中心主任) Ms Yip Yin (Centre-in-charge)

List of Management Board Members

(at 31 March 2010)
(截至2010年3月31日)

管理委員名錄

白普理上水家庭中心/ 綜合家居照顧服務隊/ 學校服務隊/ 恩霖社區服務中心

HKEC Bradbury Sheung Shui Family Centre/
Integrated Home Care Services Team/ School Services Team/
Yan Lam Community Service Centre

主席 CHAIRPERSON

陳汝生牧師 (中心總監) Rev Chan Yu Sang (Centre Director)

委員 MEMBERS

楊志光先生 Mr Yeung Chi Kong
張 杰先生 Mr Cheung Kit
冼家慧小姐 Ms Sin Ka Wai

列席 OBSERVERS

呂慶忠先生 (督導主任) Mr Lui Hing Hung (Supervisor)
朱紫薇女士 (行政主任) Ms Chu Chi Mei (Executive Officer)

List of Management Board Members

(at 31 March 2010)
(截至2010年3月31日)

管理委員名錄

粉嶺家庭中心

Fanling Family Centre

主席 CHAIRPERSON

陳金蓮牧師 (中心總監)
Rev Chan Kam Lin (Centre Director)

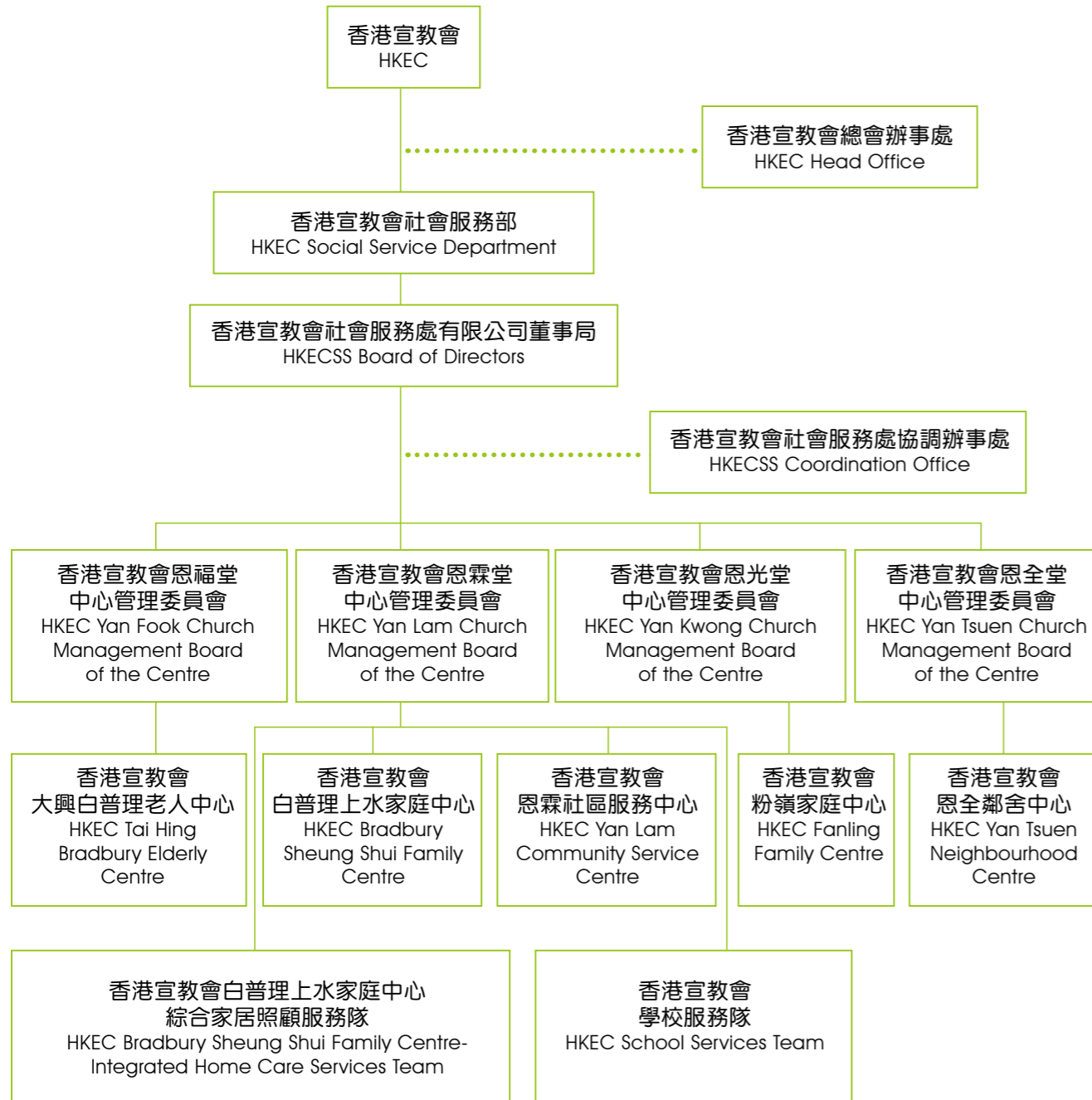
委員 MEMBERS

楊偉業先生 Mr Yeung Wai Yip
謝裕富先生 Mr Tse Tu Fu
陳小強先生 Mr Chan Siu Keung

列席 OBSERVERS

翁雅韻女士 (中心主任)
Ms Yung Ngar Wan (Centre-in-charge)

Organization Chart 架構圖



Manpower 人力編制



機構的宗旨：「實踐耶穌基督傳揚福音和服務人群的精神，為個人、家庭及社區的需要，提供優質及結合福音的社會服務」，除提示了各同工應以耶穌基督的“關愛”和“奉獻”精神作為提供社會服務的態度外，也點出了機構的服務路向和策略—就是以各種可能的方式（政府資助和自負盈虧等方式），以多元和綜合的手法，針對社會不同階層的需要，致力推動身、心、靈的健康及和諧生活。

在過往十多年，機構因應現存政府資助服務的不足及罅隙，在新界北區開辦了四個自負盈虧的社區服務單位以回應家庭、學校及社區的不同需要。在2009年12月，機構更在大埔大元邨開辦了第五個自負盈虧的服務中心—恩全鄰舍中心。以「睦鄰社區」及「全人發展」為方向，提供品格教育、愛心糧倉、親職教育、義工發展和情緒輔導…等服務。

直至2010年初為止，機構共計開辦了兩所由政府資助及五所自負盈虧的服務單位，服務對象遍及幼兒、兒童、青少年、婦女、長者、家長、學校、社區等不同年齡和階層的市民。雖然在金融海嘯的浪濤之中，透過社會各界的支持和各單位同工的 effort，我們仍能維持與往年相若的42萬人次服務量。無論在長者護理及社區照顧、特殊學習需要兒童支援、兒童及青少年成長發展、家長及家庭生活教育、社區及鄰舍連繫、短期食物支援和就業輔助等服務，皆有一定增長和創新。

現今的香港社會，貧富差距加劇，需要支援的各種社會需要和家庭問題也日益嚴重。對我們以自負盈虧方式來提供社會服務的機構來說，無疑是一巨大的挑戰。但我們相信，憑著同工的努力不懈、各界善長及熱心人士的支持，必定能在各項社區服務上榮神益人。

執行秘書：呂慶忠

Our mission " Follow Jesus Christ's example to preach the gospel and to serve people by providing social services of high quality and combines the gospel for the needs of individuals, families and community." It is not only reminding our co-workers should be prompted to Jesus Christ, "love" and "dedication" as the provision of social services and attitude, but also points out our service direction and strategy that is in every possible way (government-funded and self-financing, etc.). We combined multiple and integrated approaches for different social segments of the population by promoting physical, mental and spiritual health and a harmonious life.

In the past ten years, we opened four units of self-financing community services in North District to respond to the families, schools and community needs to take account of the existing inadequate and crevices government-funded services. In December 2009, we also opened our fifth self-financing service center at Tai Yuen Estate in Tai Po—Yan Tsuen Neighbourhood Centre with the direction of "Harmonious community" and "Holistic Development; to provide character educations, love granary, parent education, volunteer development and emotional counseling etc services.

Up until the beginning of 2010, we opened a total of two government-funded and five self-service units which served throughout the infants, children, youth, women, elders, parents, schools, communities and other people of different ages and classes. Although we are under the financial tsunami waves, but we still maintain the volume of services to 42 million passengers which is comparable with previous years with the community support and the efforts of our co-workers in various units. Whatever elderly care and community care, children with special education needs support growth and development of children and young people, parents and family life education; community and neighborhood networks, short-term food support and employment assistance and other services, those services are all growing and innovated.

Today's Hong Kong, the issues of the gap between rich and poor and in need of support of various social needs and families are also increasingly serious. Undoubtedly, it is a huge challenge to our self-financing units. However, we believe that we are still able to serve the community and glorify God with hard work with our workers, all donors and enthusiastic support from you.

Mr Lui Hing Chung
Executive Secretary

1. 愛老護老 · 建立豐盛晚年

Caring of Elderly to establish fulfilling elderly life



2. 潛能啟導 · 培育健康新生

Mentoring Potential to nurture healthy youngsters



3. 促進和諧 · 建構積極人生

Promote Harmony Community to build positive living



愛老護老 · 建立豐盛晚年

Caring of Elderly to establish fulfilling elderly life



齊助長者“腦”有所為計劃

Care for the elderly Active Mind Project

為屯門區長者提供簡短智能測驗(MMSE)、個人諮詢、記憶力和專注力等訓練，除了提供免費認知障礙檢測及提供記憶訓練活動幫助長者及早識別「輕度認知障礙」外，

We provided free cognitive assessment (MMSE), personal counseling and training classes of memory and concentration to the elderly people in Tuen Mun District. We helped them with earlier diagnosis and treatment of dementia. In meanwhile we also enhanced

更透過公眾教育活動，加強社會人士對此疾病的認識及關注、協助紓緩痴呆症對患者家屬、照顧者及社會帶來的壓力，並推動關愛長者的訊息。

public understanding of the illness through public education to relief from the burden of dementia for patients' families, caregivers and society in general. And promoted the concept of caring for the elderly among the general public.



長者家居環境改善計劃

Home Environment Improvement Scheme for the Elderly

為屯門區內缺乏家人支援、家居日久失修或設施欠佳並沒有經濟能力改善家居環境的長者，提供經費申請和轉介服務。計劃推展

The project launched and provided funding and referral service to assist elders in Tuen Mun District who are lack of financial means and family support to improve their dilapidated homes with poor fittings.

We successfully assisted needy elders to

以來，不少長者得以購置新的家居電器和接受了簡單的家居維修服務，使暮年生活重添生氣。

improve their home environment and enhanced domestic safety with the minor home maintenance and improvement services as well as purchasing essential household items and electronic appliances.



怡康天地（社區照顧試驗計劃） Health network on Elderly (Community Care Trail Scheme)

為支援北區家庭日間照顧體弱或殘疾長者的需要，計劃提供了融合社康活動、復康運動和營養午餐等元素的日間暫託服務，

With the support of the Sir Robert Ho Tung Charitable Fund, a elderly half day-care service was held to support the needy families. We combined community activities, rehabilitation exercises and nutritious lunch

使受惠長者能繼續在熟悉的社區中生活外，也舒緩了照顧者身、心的壓力。

to the elderly who suffering from mild to moderate grade of disability. In order to enable them to continue living in familiar community, but also relieve the caregiver physical and mental pressure.

左鄰右里長者社區關愛試驗計劃 - 「沿途有你」 Pilot Neighborhood Active Aging Project - Caring for Elders

為提升社區預防虐老的訊息和鄰舍對長者的照顧網絡，計劃培訓了北區數拾位義工，主動探訪其鄰近的長者，給予關心和邀請一同參與為長者而設的日營、嘉年華會及

With the support of The Labor and Welfare Bureau and the Elderly Commission, the pilot project is held to prevent elder abuse and make use of the comprehensive and diversified support networks built within the community. Numbers of volunteer are trained and visited

社區活動。活動過程除加強了社區人士對虐老問題的關注，增加了參與長者與鄰居的關係外，也讓部份有被虐危機的長者得到援助的轉介，使他們能生活在一更安全的社區。

the elderly in the neighborhood, in order to care and invite them to join a one day elderly camp, carnivals and community program. During the progress, it was successfully to enhance the awareness of elder abuse issue and the relationship between elderly and their neighbors.



活出美麗人生計劃 Beautiful life project

透過義工訓練，一方面讓北區的婦女協助長者進行美髮、化妝、形像設計及拍攝人像照片，以改善長者儀容和建立「美麗」形象；另一方面也由長者教援幼兒進行手工藝創作，組織結合三代的合唱團和

Beautiful life project was launched in Fanling Family Centre, a series of volunteer training was provided to a group of women and elderly. After training, the women volunteers provided hair-dressing, make up, image design and portrait photo shoot to numbers of elderly in order to improve their appearance and establish « elderly beautiful image ». On the other hand, the trained elderly taught a group of children art and craftsmanship and a cross

音樂會。展現跨代共融、老有所為的精神。計劃除擴闊了參與者的視野和能力外，也結合了幼稚園、髮型及美容公司、攝影公司、教會等多類型團體的協作，有助促進社區和諧及關愛。

three generation choir is formed and performed in a singing concert. We successfully promoted the intergenerational solidarity and the sense of worthiness among the community. The project helped to widen the participants a sense of vision and ability, but also a combination of kindergarten, hair and beauty company, photography company, church groups and other types of collaboration which helped to promote community harmony and love.



長者鄉郊網絡 Elderly Rural Network

每星期定時定點地巡迴到北區九條鄉村，為數百名長者進行健康檢查、專題講座和小組活動，舒緩了長者沈靜的心靈外，也帶動了城、鄉的交流和跨代的共融。

To relieve the loneliness of elderly and facilitate the harmony between urban and rural area and cross generation, we

visited nine rural villages in North District weekly, health check, features talk and group activities are held.



潛能啟導 · 培育健康新生

Mentoring Potential to nurture healthy youngsters



幼兒樂Playgroup Pre-schoolers Playgroup

以唱遊、講故事、手工、集體遊戲…促進幼兒的人際、社交和認知能力，提升親子

We promote children's interpersonal, social and cognitive abilities; enhance parent-child relationship with singing, storytelling, crafts, group games. The program and

關係，活動深受來自各區的家長和幼兒歡迎，為幼兒的未來發展奠定良好基礎。

activities are welcomed by parents and children from the districts which is a good foundation for children future development.



「書伴我行」親子伴讀計劃

"Bring Me a Book" Family reading scheme

親子伴讀技巧、講故事技能培訓，提升了參與家長與子女溝通和關係外，也引發了

We promoted parenting reading skills and storytelling skills training to the parents in north district to improved communication and

兒童讀書、愛書的興趣。奠定了兒童博聞和自發學習的基礎。

involvement between parents and their children, but also increase the interest and spontaneous of reading among the children .



特殊學習需要校本支援服務 Special Educational Needs Services



根據及早識別、及早介入、全校參與、家校及跨界合作等策略，協助學校為有讀寫障礙、專注力不足、各類學習障礙…等

According to early identification, early intervention, school involvement, home-school and cross-border cooperation strategies to help schools with dyslexia, attention deficit, all types of learning

學童，提供支援和輔導服務。改善學生的學習處境和能力之外，也為家長和教師提供專業的培訓和諮詢。

disabilities and other students. We has provided support and counseling services to improve student learning situations and ability, but also provided professional training and counseling for parents and teachers.

子情計劃：兒童發展障礙的希望

Children's Love Scheme: Hope for developmental of disabilities children



為大埔區基層及低收入家庭而開辦的試驗性計劃，為有「感覺統合失調」兒童的家庭，提供兒童及家長的感覺統合運動

It is a pilot schemes for the Primary and low-income families with "sensory integration disorder" children. We provided sensory integration training for the children and

訓練，除提升了家長掌握了改善兒童發展障礙的技巧外，也培訓了一批家長義工以支援區內有需要的家庭。

their parents to raise their skills of improve developmental disabilities and also trained a group of parent volunteers to support local families in need.

成長的天空計劃

Understanding Adolescent Project (Primary)



透過社工到校為小四至小六同學舉辦的抗逆力培訓和家長教育服務，為十多所小學及共數百名學童和家長以小組、營會、講座

We has held Understanding Adolescent Project (Primary) to more than a dozen primary schools and a total of hundreds of Primary four to primary six school children and parents in small groups, camps, seminars and individual

和個人輔導…等形式，強化了學生的自我認識和面對逆境的能力。使參與者的個人生命力增強，家庭關係更親密。

counseling and other activities; to strengthen their self-awareness and ability to face adversity. So that it was successfully to reinforce their personal vitality and more intimate family relationships.

「活力新一代」公民教育活動

Fostering youngsters' civil education activities

培育中學生的公民意識和領袖才能，以小組、社區探索和義務工作等訓練，安排了參加的青年人進行長者探訪、輔助小學生

We fostered civic awareness and leadership skills of numbers of secondary school students with groups, community exploration and voluntary work. We arranged visiting of elderly and tutoring

功課...等服務，以此提升其「積極人生、貢獻社群」的理念和對社會責任的承擔意識。

service to primary school students etc community training for the participants in order to enhance their "active life and contribute to community" concept and sense of social responsibility.



遊學體驗支援服務

Experiential Study tour Service

協助六所中、小學策劃和安排整全的遊學體驗活動，讓五百多名中、小學生透過在長洲、澳門、廣州、新加坡、北京的遊歷和

We assisted six primary and secondary schools for the arrangement of study tours to Cheung Chau, Macau, Guangzhou, Singapore and Beijing. Totally more than five hundred primary and secondary students travelled and earned

學習交流，提升了參與者的團隊精神、抗逆能力、學習動機、生活自理及獨立能力，為成為未來領袖打下了良好的基礎。

special learning exchanges experience ; to enhance their team spirit , the ability of anti-reverse, learning motivation, self-care and independence ; to laid a good foundation of becoming future leaders.



促進和諧 · 建構積極人生

Promote Harmony Community to build positive living



家添快樂行動

Increase Happiness Action

透過多元化小組學習、社區教育展覽、搵工快樂網、婦女茶聚和家務助理培訓...等活動，提升了北區的兒童、婦女至長者在睦鄰關係和互助關懷等正能量。使無論在

« Increase Happiness Action » project sucessfully enhanced the neighbourhood relationship, mutual care and other positive elements among the children ,women and elderly in North District through diversified group learning, community education exhibition, jobsearch networking, women's tea gathering

婦女的鄰舍網絡、對乏人照顧的街童關注、個人興趣和謀生技能的學習、親子相處技巧及社區的歡樂和積極氣氛均有所增長。

and domestic helper training...etc activities. It is successfully reinforced the the neighborhood in terms of women's networks, the street children unattended concerns, personal interests and learning life skills, parenting skills and get along with the joy of community and positive atmosphere on the rise.



開心工程@清河

Happy Project @ Ching Ho

在2009年5月開展了為期三年的社區互助照顧促進計劃。在首年的十個月內已成功協助了十多名參加者，學習了化妝和剪髮技能，並以此技能服務區內長者、兒童和

In May 2009 we launched a three-year plan to promote mutual care in the community. During the ten months in the first year, we have helped more than a dozen participants to learn makeup and hair-cutting skills, and served the elderly, children

社福團體。除讓參加的婦女提升了其自信心和就業發展空間外，也締造了社區的關愛、共融和開心氣氛。

and social welfare groups with the skills. In addition, the participated women has been enhanced their self-confidence and employment development, but also created a community of caring, inclusive and fun atmosphere.



舞動健康人生計劃 Dance · Healthy Life

揉合了物理治療、現代舞和家務動作元素而設計出來的「健舞十式」舞蹈，透過巡迴社區展覽、健舞大使培訓、街頭健舞示範…等活動，提升了北區三千居民對健康的

"Ten Healthy Dance motion" is designed which is combined with physical therapy, modern dance and household chores movement etc elements. We promoted it to 3000 residents in North District to enhance their health concern and interest in sports among the community

關注和運動的興趣。而以持久運動為目標的「健舞會」也由此衍生出來，讓運動與健康的訊息繼續延展開去。

through exhibitions, health ambassador training and street dance demonstrations etc health activities. And the sustained campaign "Dancing Club" are thus derived, so that the message of exercise and healthy started to be continued.



「愛心糧倉」短期食物支援服務

"Love granary" short-term food assistance services

為大埔區貧困家庭而開辦的「愛心糧倉」短期食物支援服務，把善心人士和團體捐助的食物與有需要家庭分享。除了表達社區

We launched a "love granary" of short-term food assistance services to the poor needy families in Tai Po District, the kind-hearted individuals and organizations donated food to share with families in

對他們的關懷外，也透過關心會談、家訪、愛筵和聯誼…等活動，促進受惠家庭的認識，建立彼此情誼及網絡，建立睦鄰社區。

need. In addition to express concern from the community, but also established friendship and networking with each other and established through talks, home visits, potluck and fellowship.



Our Service Units and Statistics

各中心簡介及統計摘要

- 1 香港宣教會大興白普理老人中心
Hong Kong Evangelical Church Tai Hing Bradbury Elderly Centre
- 2 香港宣教會白普理上水家庭中心
Hong Kong Evangelical Church Bradbury Sheung Shui Family Centre
- 3 香港宣教會白普理上水家庭中心
綜合家居照顧服務隊
Hong Kong Evangelical Church Bradbury Sheung Shui Family Centre
Integrated Home Care Services Team
- 4 香港宣教會粉嶺家庭中心
Hong Kong Evangelical Church Fanling Family Centre
- 5 香港宣教會學校服務隊
Hong Kong Evangelical Church School Services Team
- 6 香港宣教會恩霖社區服務中心
Hong Kong Evangelical Church Yan Lam Community Centre
- 7 香港宣教會恩全鄰舍中心
Hong Kong Evangelical Church
Yan Tsuen Neighbourhood Centre

香港宣教會 大興白普理老人中心

Hong Kong Evangelical Church
Tai Hing Bradbury Elderly Centre
(政府及公益金資助服務單位)
(Subvented by Government & Community Chest)



背景及發展歷程

香港宣教會大興白普理老人中心成立於一九八二年十一月，是香港宣教會首間老人福利服務單位。中心秉承基督的愛，為屯門區

的長者提供多元化的服務，鼓勵長者享受豐盛之晚年，同時為個人、家庭之需要，提供靈性、生理、心理社群上的支援及發展服務。

Background and Development

Established in Nov of 1982 in Tai Hing Estate, Tuen Mun, the Centre is the first social service unit of HKEC. Center follows Jesus Christ's love, provides comprehensive service to the elderly

and enhance positive aging. Furthermore, we provide religious, psychological and physical supportive and developmental service for the needs of individuals and families.

服務目標及內容

- 社交及康樂發展服務
- 健康支援服務
- 個人輔導及轉介服務
- 教育及發展性小組服務
- 長者服務優惠申請、平安鐘

Service Objective and Content

- Social and recreation developmental service
- Health support service
- Personal counseling and referral service
- Educational and developmental group
- Elderly privilege service applications

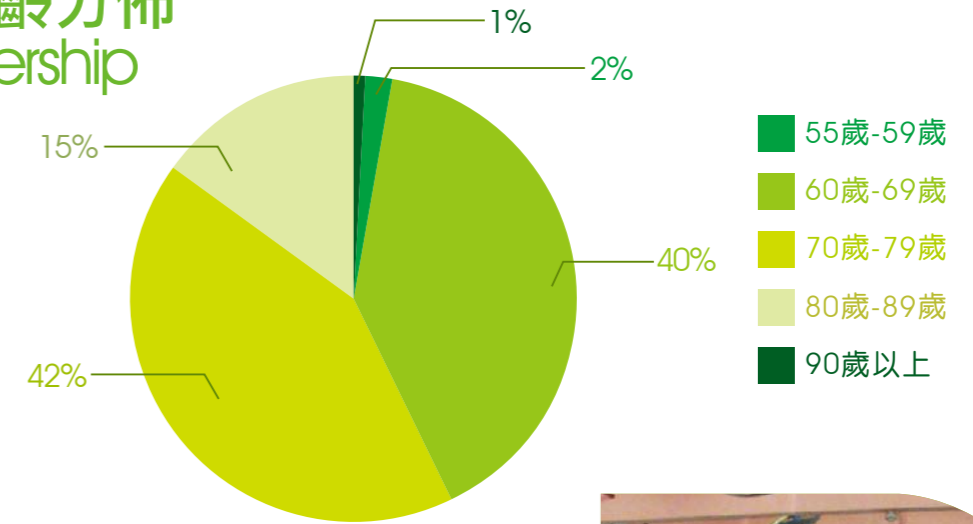


接受服務個案

Cases of Beneficiaries (以2010年3月底之數字為依歸)

會員人數 Number of members	偶到服務 Walk-in Services (Person Times)	諮詢服務 Enquiries (Person Times)	開放節數 Opening Session (Sessions)
771	33,484	4,087	545

會員年齡分佈 Membership



服務類別 Services Item		服務次數 Number of Service (Times)	服務人次 Quantity of Service(Person Times)
小組 Group	教育/發展性服務小組 Educational/ Developmental Group	304	10,478
	社交/康樂服務 Service/Recreation Activities	70	1,359
	興趣小組 Interest Group	612	10,375
	服務性小組 Servicing	122	1,962
活動 Activity	交誼性活動 Social Activities	83	2,709
	旅行 Outings	15	831
	文化/節日活動 Cultural/ Festive Program	21	2,205
	健康活動/講座 Health Promoting Activities /Talks	63	2,598
	義工服務/探訪 Voluntary Services/Visiting	25	1,399
	其他活動 Others	9	1,102
	午餐小聚 Lunch Gathering	222	3,855
	個人服務/查詢 Individual Service/Enquiry	12	4,087
	個案 Case Counseling and Referral	-	35
合共服務 Total		1,558	42,995



背景及發展歷程

白普理上水家庭中心在1991年3月於上水彩園邨設立，由恩霖堂所承辦及管理，為香港宣教會首間以自負盈虧方式運作的綜合家庭服務中心。中心初期以學童託管及家長活動為主要服務，後於1994及1998年與兩隊由香港政府津助的家務助理隊（後於2004年轉型綜合家居照顧服務隊）整合，使中心服務更全面及更具規模。隨著社區的轉變及服務的發展，中心於2007年9月，把已經成熟發展的學校服務撥歸新成立的「香港宣教會學校服務隊」營辦，為機構開拓了另一全新的自負盈虧服務

單位，以全港學校為服務對象。

及後，因關心上水清河邨的服務需求，遂向會方及政府申請開辦另一自負盈虧服務單位—香港宣教會恩霖社區服務中心。隨著新中心於2008年7月在上水清河邨投入服務後，中心便把原先的學童及家長服務團隊，調往支援新中心的發展。

在經歷了兩年的服務及架構重整後，白普理上水家庭中心亦因應社區人口結構的變化，加強開拓中年人士及長者的服務，為建構一和諧及健康的社區而努力。

Background and Development

Established in March 1991 in Choi Yuen Estate, Sheung Shui, Bradbury Sheung Shui Family Centre is the first self-financed integrated service family Centre of HKEC. Before 1994, it mainly provided after school care service and parent education activities. In 1994 and 1998, it combined 2 government- subvented home help teams, which were transformed into and integrated "Home Care Services team" in 2004. With such moves, the centre has become a more comprehensive and sizeable service provider. With the community change and service development. In Sep of 2007, the well developed school services Department is separated and transformed into "School Services Team" as another single self-financed unit to provide

comprehensive service to local School in Hong Kong.

Afterward, center applied and established another self-financed service unit to concern and response to the needy new public estate in North District — HKEC Yan Lam Community Service Centre. In July of 2008, the child and parents service Team in our ordinary center is transferred together to the new center in order to support the service development in Ching Ho Estate.

Following the two years service restructuring and community population changing, Bradbury Sheung Shui Family Center enhances the development of adult and elderly service; we strive to construct a harmony and healthy community.



服務目標及內容

- 協助解決家庭在照顧長、幼上的困難
- 支援家庭中的個人成長及發展需要
- 發掘各家庭成員的潛能以貢獻社會
- 倡導及協助建立家庭中的和諧生活
- 促進家庭間之網絡建立及社區的和諧
- 融合福音與服務，引發生命質素的更新

Service Objective and Content

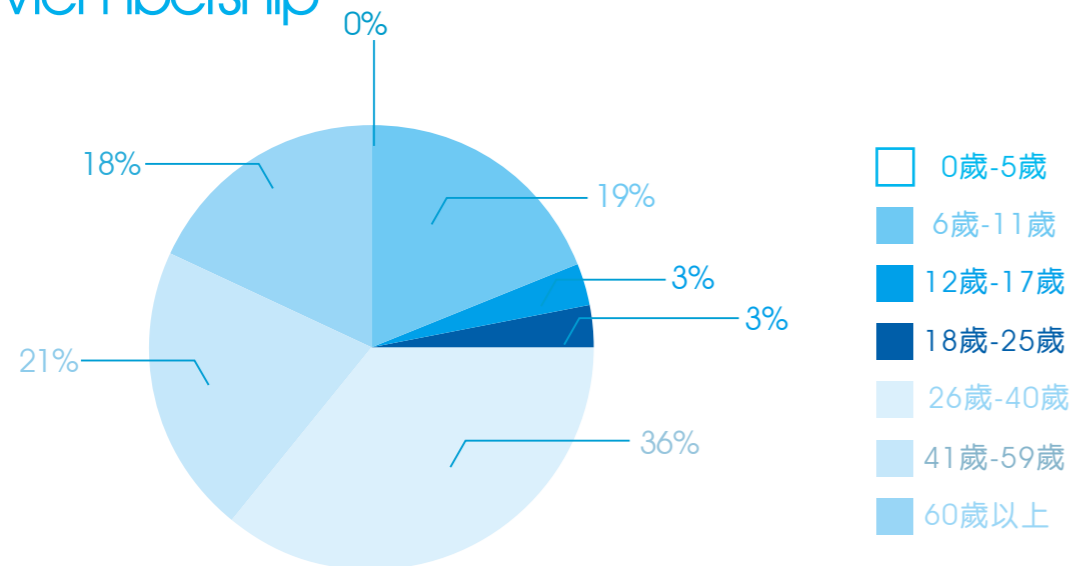
- To assist families which need help in taking care of family members
- To support family members to grow and to develop
- To help family members to realize their potentials to contribute
- To guide and to assist in building up harmonious families
- To facilitate network forming among families to build a caring community
- To consolidate gospels and services to renew the quality of life

接受服務個案

Cases of Beneficiaries (以2010年3月底之數字為依歸)

會員人數 Number of members		偶到服務 Walk-in Services (Person Times)	諮詢服務 Enquiries (Person Times)	開放節數 Opening Session (Sessions)
個人 325	家庭 252	14,680	23,488	734

會員年齡分佈 Membership



服務統計 Statistics of Services

服務類別 Services Item	服務次數 Number of Service (Times)	服務人次 Quantity of Service(Person Times)
課餘託管服務 After School Care	207	7,294
幼兒親子活動 Early Childhood and Family Activities	441	4,490
兒童、青少年發展及成人興趣小組 Children, Teenagers development and Adult's interest group	677	6,538
家庭及社區教育活動 Family and Community Education Activities	15	349
社區健康服務 Community Health Service	338	7,862
鄉郊服務 Rural Service	369	9,689
長者社群發展活動 Elderly Social Development Activities	480	9,974
家居支援服務 Home Care Service	8,186	8,186
社區投資共享基金計劃 CIIF Project	118	3,266
合共服務 Total	10,831	57,648



香港宣教會白普理上水家庭中心綜合家居照顧服務隊

Hong Kong Evangelical Church
Bradbury Sheung Shui Family Centre
Integrated Home Care Services Team
(政府資助服務單位)
(Subvented by Government)



背景及發展歷程

綜合家居照顧服務隊為香港宣教會白普理上水家庭中心轄下的服務單位，由香港政府提供資助。

為配合家庭服務多元化的需要，中心於一九九四年向香港政府申請資助首隊家務助理隊，並於上水太平邨設立隊址，為北區居民提供到戶生活支援服務。於一九九八年八月，因應區內服務需求的增加，再獲香港政府資助第二隊家務助理隊。及後，因應長者



護理服務的需求日增，於二零零四年四月，兩隊家務助理隊轉型為“綜合家居照顧服務”，並改名為“香港宣教會白普理上水家庭中心綜合家居照顧服務隊”。為了整合中心的其他服務及方便區內居民接觸，服務隊的總辦事處及聯絡處設於彩園邨香港宣教會白普理上水家庭中心本部內，而日常服務的運作則仍以上水太平邨的隊址為主，使服務受眾能得到更方便和更全面的照顧。



Background and Development

Integrated Home Care Services Team is a government- subvented service team of HKEC Bradbury Sheung Shui Family Center

In response to the diversity community demands, in 1994, the first Home Help team is set up at Tai Ping Estate in Sheung Shui with government subsidiaries for providing livelihood supportive service to the residence. In Aug 1998, the second Home Help team is set up to response the demanding and ever-changing community. Subsequently, as the demand of elderly care was multiplied expanding, we combined two

home services team, which were transformed into an integrated home care services team with Government subsidiaries in April 2004 and renamed "HKEC Bradbury Sheung Shui Family Centre Integrated Home Care Services Team"

We station at Choi Yuen Estate in Sheung Shui as our headquarters and correspondence address in order to integrate with other service and convenience to residence. Daily operation is stationed at Tai Ping Estate in Sheung Shui simultaneously to provide convenient and comprehensive service to the beneficiaries.

服務目標

綜合家居照顧服務隊的目標，是為自我照顧能力及維持家庭正常功能有困難的個人與家庭，提供協助以支援日常生活所需，使能夠選擇繼續生活在熟悉的環境和社區。服務除以

鞏固及支援有需要的家庭和人士在生活及護理事務的處理外，對社群、心理及靈性發展上的需要亦同時給予適度的幫助。



Objective

Integrated Home Care Service Team is one kind of community support services providing a wide range of care and services to the elders, the disabled, individuals and families with social need, so as to actualize the concepts of "ageing

in place" and continuum of care". We assist the development of social, physical and religious together to reinforce and support the necessary families and individuals for their daily care.



服務對象

- 自我照顧有困難的人士，例如年老、體弱、傷殘、長期病患者、精神病康復者、照顧者未能給予足夠照料的人士等；及
- 現正接受院護照顧或其他社會服務，在來往接受服務或假期回家時，需護送或其他服務者；及
- 其他由社會工作者認為有此項服務需要的受眾；及
- 社會福利署轉介之「體弱個案」。



Beneficiaries

- Lack of care: elderly, frail, disable, Chronic illness, ex-mentally ill persons and lack of care...etc.
- Hospital or welfare organization existing clients who need escort service between home and hospital/organization
- Cases referral by registered social workers
- Frail Cases (Assessed by Standardized Case Need Assessment Management Office)



服務內容及提供方法

- 家居清潔：一般家居地方的清潔，如：清理天花板、地板、廳房、廚廁等地方。
- 個人護理：協助洗澡、洗頭、抹身、復康性運動等個人料理。
- 膳食服務：為弄膳有困難人士，提供膳食。
- 洗衣服務：服務受眾洗衣有困難或不便時，代安排清洗及處理其衣物。
- 購物及代辦服務：協助行動不便的服務受眾購買日常用品，代辦水、電費之繳交、取藥等事宜。
- 護送服務：護送服務受眾接受診治、散步或往接受社會服務。
- 照顧幼兒：家庭出現困難或變故時，代短時間幼兒照顧。
- 集體及特別活動：促進服務受眾繼續社區生活和參與活動如：社交小組、健康檢查、講座及戶外活動等
- 健康護理：由護士上門為「體弱個案」提供適切的護理服務。
- 復康服務：為「體弱個案」提供物理治療、職業治療之復康保健服務。

Our Scope of Services

- General Household / Domestic duties
- Personal Care
- Provision of Meal (Meal delivery, Preparation of meal)
- Laundry
- Purchase and Delivery of daily necessities
- Escort
- Child / Adult-Mind
- Social activities
- Nursing Care (Basic nursing care, special nursing care)
- Home safety and Health Assessment
- Rehabilitation exercise



接受服務個案 Cases of Beneficiaries (以2010年3月底之數字為依歸)

個案類別 Type of Cases	長者個案 Elderly	傷殘個案 Disabled	家庭特殊需要個案 Special Family Needs	特別體弱個案 Frail	總個案 Total
接受服務個案 Quantity of Cases	339	27	23	10	399

服務統計 Statistics of Services



服務類別 Services Item	家居服務 Home Care Service (家居清潔、送飯、 洗衣、護送、 代辦等服務)	護理服務 Nursing Service (健康護理、復康護理、 復康保健等服務)	社交活動 Social Activities (小組、戶外活動等)	總計 Total
提供次數 Quantity of Services (Times)	57,475	9,836	32	67,343
接受服務人次 Number of Beneficiaries (Person Times)	57,475	9,836	909	68,220



香港宣教會 粉嶺家庭中心

Hong Kong Evangelical Church
Fanling Family Centre



背景及發展歷程

粉嶺家庭中心在1993年5月於粉嶺華明邨設立，為本會第三所社會服務中心。同樣以自負盈虧模式，為區內家庭提供綜合性服務，包括學童託管及家庭教育服務、社區教育活動、家庭活動及資源服務、義工發展及培育服務、宗教輔導及生活教育。

Background and Development

Established in May 1993 in Wah Ming Estate, Fanling Family Centre is the third social service center of HKEC, which is also self-financed. We provide integrated after-school care and parent education services, community education activities, family-based activities and resources service, volunteer development and training, religion counseling and life education programme.

接受服務個案 Cases of Beneficiaries (以2010年3月底之數字為依歸)

會員人數 Number of Members	偶到服務 Walk-in Services	諮詢服務 Enquires	開放節數 Opening Session
833人	10,724人次	4,542人次	598節



服務統計 Statistics of Services

服務類別 Services Item	服務次數 Number of Service (Times)	服務人次 Quantity of Service(Person Times)
託管服務 After School Care	364	1,454
功課輔導 Tuition	2,364	16,477
個別約談 Counseling	210	210
青少年成長及培育活動 Youth Development	83	1,424
兒童教育課程 Children Education	1,039	7,120
兒童興趣課程 Children Interest Group	631	3,852
社區活動 Community Program	23	1,736
家長教育課程 Parenting Program	226	1,600
家長興趣課程 Parent Interest Group	414	4,009
圖書館服務 Library	598	752
義工服務 Volunteer Development	26	643
合共服務 Total	5,978次	39,277人次



香港宣教會 學校服務隊

Hong Kong Evangelical Church
School Services Team



背景及發展歷程

香港宣教會學校服務隊之前身為「香港宣教會白普理上水家庭中心—學校服務部」，由2000年開始已為北區及本港各區學校提供各項支援及發展性服務。因應服務的發展及機構的架構重組，由2007年9月1日起，成功申請為獨立註冊服務單位，希望能更專注地及更靈活地為本港中、小學及幼稚園提供多元化的支援及輔助服務。



初期，服務隊主要為支援學校教育的需要，提供全方位學生輔導服務、成長的天空（小學）計劃、學生課餘成長活動、家長教育及教師支援等服務。及後，因應全人教育的需要，服務隊更開辦學童特殊教育支援服務、地區為本小學支援計劃、境外及境內遊歷學習支援活動。



Background and Development

Hong Kong Evangelical Church School Services Team is one of the non-profit making services unit of HKCSS, formerly known as the "Hong Kong Evangelical Church Bradbury Sheung Shui Family Centre-School services Department". As early as 2000, HKECSST has provided a self-financing basis service to secondary schools, primary schools and kindergartens with various kinds of supportive and developmental services, mainly supporting schools in upgrading the quality of teaching, we also promoting the interaction and harmony

among students, teachers and community.

We mainly provided Comprehensive Student Guidance Service, Understanding Adolescent Project (Primary School), After School Programs, Parenting and teachers' supportive services to support the education needs in the early stage. Subsequently, in response to the needs of whole person education development, we developed special Educational Needs Service, School based after school Learning and Support Programs and Local and outbound Study Tour Service.

服務目標及內容

- 全方位學生輔導服務
- 成長的天空計劃
- 校本課後學習及支援計劃(區本計劃)
- 課餘活動小組及支援服務
- 特殊教育需要支援服務
- 家長教育活動
- 教師培訓及支援活動
- 境內及境外遊學服務
- 駐幼稚園社工服務
- 學生領袖及義工培訓
- 優質教育計劃及其他創新協作計劃

Service Objective and Content

- Comprehensive Student Guidance Service
- Understanding Adolescent Project
- School- based After School Learning and Support Programmes: Community –based projects
- After-school program
- Special Educational Needs Service
- Parenting education program
- Teachers Training
- Inbound and Outbound Study Tour Service
- Kindergarten stationing Guidance Service
- Student leader and volunteer training
- Quality Education projects and other pioneers project

服務統計 Statistics of Services

服務類別 Services Item	服務次數 Number of Service (Times)	提供服務日數/次數 Number of Service (Days/times)	接受服務人次 Quantity of Beneficiaries
全方位學生輔導服務 Comprehensive Student Guidance Service	3	1,222	61,722
成長的天空學生輔導計劃 Understanding Adolescent Project	12 (31組)	393	3,875
特殊教育及新來港學童支援服務 Special Educational Needs and New Arrival Students Support Service	6	679	5,565
校本課後學習及支援計劃：區本計劃 School-based After-School Learning and Support Programmes: Community-based Projects	16	207	11,691
駐幼稚園社工服務 Kindergarten stationing Guidance Service	1	66	701
境外遊學支援服務 Outbound Study Tour Service	7	75	716
推廣過濾軟件使用計劃 "District Talk-cum-workshop for the Use of Filtering Software" Subsidy Scheme	44	88	3,080
家長教育及學生成長發展 Parenting Education and Student Development	19	383	7,976
合共服務 Total	108	3,113	95,326

2009-2010協作學校

List of Schools Served by the School Services Team in 2009-2010



上水 Sheung Shui	上水惠州公立學校	Wan Chow Public School (Sheung Shui)
	上水惠州幼稚園(分校)	Sheung Shui Wai Chow Kindergarten (BR)
	中華基督教會上水堂幼稚園	Church of Christ in China Sheung Shui Church Kindergarten
	仁濟醫院永隆幼稚園暨幼兒中心	Yan Chai Hospital Wing Lung Kindergarten
	田家炳中學	Tin Ka Ping Secondary School
	李志達紀念學校	Lee Chi Tat Memorial School
	東華三院港九電器商聯會小學	T.W.G.Hs. H.K. & KLN. E.A.M.A. Ltd. School
	香海正覺蓮社佛教正慧小學	HHCKLA Buddhist Wisdom Primary School
	香海正覺蓮社佛教陳式宏學校	HHCKLA Buddhist Chan Shi Wan Primary School
	曾梅千禧學校	Tsang Mui Millennium School
	聖公會榮真小學	SKH Wing Chun Primary School
	鳳溪第一小學	Fung Kai No.1 Primary School
	鳳溪創新小學	Fung Kai Innovative School
	上環 Sheung Wan	英皇書院同學會小學第二校
大埔 Tai Po	大埔崇德黃建常紀念學校	Sung Tak Wong Kin Sheung Memorial School
	保良局田家炳小學	Po Leung Kuk Tin Ka Ping Primary School
	港九街坊婦女會孫方中小學	HK & KLN KaiFong Women's Association Sun Fong Chung Primary School



2009-2010協作學校

List of Schools Served by the School Services Team in 2009-2010

元朗 Yuen Long	中華基督教會基元中學	The Church of Christ in China Kei Yuen College
	中華基督教會譚李麗芬紀念中學	The Church of Christ in China Tam Lee Lai Fun Memorial Secondary School
	元朗官立小學	Yuen Long Government Primary School
	元朗信義中學	Yuen Long Lutheran Secondary School
	佛教榮茵學校	Buddhist Wing Yan School
	聖公會白約翰會督中學	SKH Bishop Baker Secondary School
天水圍 Tin Shui Wai	天水圍循道衛理小學	Tin Shui Wai Methodist Primary School
	伊利沙伯中學舊生會湯國華中學	Queen Elizabeth Old Students' Association Tong Kwok Wah Secondary School
	香港中文大學校友聯會張煊昌中學	CUHK FAA Thomas Cheung Secondary School
屯門 Tuen Mun	迦密唐賓南紀念中學	Carmel Bunnan Tong Memorial Secondary School
	新生命教育協會平安福音中學	NLSI Peace Evangelical Secondary School
牛池灣 Ngau Chi Wan	聖公會聖約翰小學	S.K.H. St. John's Primary School
牛頭角 Ngau Tau Kok	聖公會基樂小學	S.K.H. Kei Lok Primary School
北角 North Point	東華三院李潤田紀念中學	TWGHs Lee Ching Dea Memorial College
打鼓嶺 Ta Ku Ling	打鼓嶺嶺英公立學校	Ta Ku Ling Ling Ying Public School
沙田 Shatin	九龍城浸信會禧年(恩平)小學	Kowloon City Baptist Church Hay Nien (Yan Ping) Primary School
	沙田蘇浙公學	Kiangsu-Chekiang College (Shatin)
	基督教香港信義會禾輦信義學校	The Evangelical Lutheran Church of Hong Kong Wo Che Lutheran School
	培基小學	Stewards Pooi Kei Primary School
	樂善堂楊葛小琳中學	Lok Sin Tong Young Ko Hsiao Lin Secondary School
沙頭角 Sha Tau Kok	山咀公立學校	Shan Tsui Public School
東涌 Tung Chung	保良局馬錦明夫人章馥仙中學	Po Leung Kuk Mrs Ma Kam Ming-Cheunf Fook Sien College

2009-2010協作學校

List of Schools Served by the School Services Team in 2009-2010

粉嶺 Fanling	上水宣道小學	Alliance Primary School, Sheung Shui
	五旬節于良發小學	Pentecostal Yu Leung Fat Primary School
	五旬節靳茂生小學	Pentecostal Gin Mao Sheng Primary School
	方樹福堂基金方樹泉小學	FSFTF Fong Shu Chuen Primary School
	香海正覺蓮社佛教正覺蓮社學校	Buddhist Ching Kok Lin Association School
	粉嶺救恩書院	Fanling Kau Yan College
荃灣 Tsuen Wan	天主教石鐘山紀念小學	Shek Chung Shan Memorial Catholic Primary School
	佛教林炳炎紀念學校	Buddhist Lam Bing Yim Memorial School
	荃灣公立何傳耀紀念中學	Tsuen Wan Public Ho Chuen Yiu Memorial College
將軍澳 Tseung Kwan O	天主教聖安德肋小學	St Andrew's Catholic Primary School
深水埗 Sham Shui Po	深水埗街坊福利會小學	ShamShuiPo Kaifong Welfare Association Primary School
	聖公會聖安德烈小學	S.K.H. St. Andrew's Primary School
黃大仙 Wong Tai Sin	浸信會天虹小學	Baptist Rainbow Primary School
葵涌 Kwai Chung	東華三院陳兆民中學	T.W.G.Hs Chen Zao Men College
樂富 Lok Fu	天主教博智小學	Price Memorial Catholic Primary School
觀塘 Kwun Tong	聖公會德田李兆強小學	SKH Tak Tin Lee Shiu Keung Primary School



香港宣教會 恩霖社區服務中心

Hong Kong Evangelical Church
Yan Lam Community Service Centre

背景及發展歷程

恩霖社區服務中心在2008年5月於上水清河邨設立，由恩霖堂所承辦及管理。因關心上水清河邨——一個新落成及入伙的公共屋邨——的服務需求，遂把原先在彩園邨「白普理上水家庭中心」的兒童及家長服務團隊抽調出來

成立此以自負盈虧方式營運的中心。

中心計劃以「友善家庭」、「睦鄰社區」為服務方向，提供一站式的資源、支援和發展性服務予區內居民。



Background and Development

Yan Lam Community Service Centre is set up at Ching Ho Estate in Sheung Shui in May of 2008 and managed by HKEC Yan Lam Church. In response to the services demand of the newly-developing public housing estate, our child and parent department of Bradbury Sheung Shui

Family Centre is separated and operate in self-finance bases in the new center. "Friendly family" and "Harmonious community are the direction of the center with comprehensive resources, support and developmental services.

服務目標及內容

- 推動居民互助網絡的建立，倡導和諧及健康的社區；
- 提供家庭資源及支援服務，及早識別及支援有需要家庭；
- 推動家庭及親子教育，提升家庭抗逆能力；
- 推動敬老護老精神，促進跨代共融關係；
- 推動生命及靈智教育，提升居民精神及心靈的健康成長。

Service Objective and Content

- To Facilitate community social network and peer support to develop a harmony and healthy community
- To provide family resources and supportive service and enhance awareness of needy family at an early stage
- To facilitate parenting and family education to increase the ability of "against adversity"
- To promote positive aging and Harmony of Inter-generation by providing Elderly resources and supportive Service
- To consolidate religious education and service to renew the quality of life and mental healthy



居民網絡及支援服務
Community network and supporting service

- 社交聯誼小組
Social peer groups
- 義工培訓
Volunteer Training
- 居民互助小組
Residents support Group
- 成人興趣發展小組
Adult Interest Group

家庭資源及支援服務
Family resources and supporting service

- 學童課餘託管
After-School Care
- 書刊借閱
Reading Activities
- 家庭資源查詢及轉介
Family resources enquiry and referral
- 家庭生活資訊及諮詢
Family Information and Enquiry

長者資源及支援服務
Elderly services

- 長者健康檢查
Elderly Health Check
- 長者社交活動
Elderly Social Group
- 義工探訪
Volunteer visit

生命及靈智教育服務
Life Education & Religious services

- 生命及宗教教育活動
Life Education & Religious Activities
- 宗教輔導及諮商
Religious Counseling & Enquiry

家庭生活及親子教育服務
Parent and Child education service

- 家長小組
Parents group
- 親子小組
Parent and Child groups
- 幼兒成長培育活動
Toddler's nurture activities
- 兒童興趣發展小組
Children's development groups
- 家庭旅行
Family outing

其他社區參與及創新服務
Other community program and pioneer service

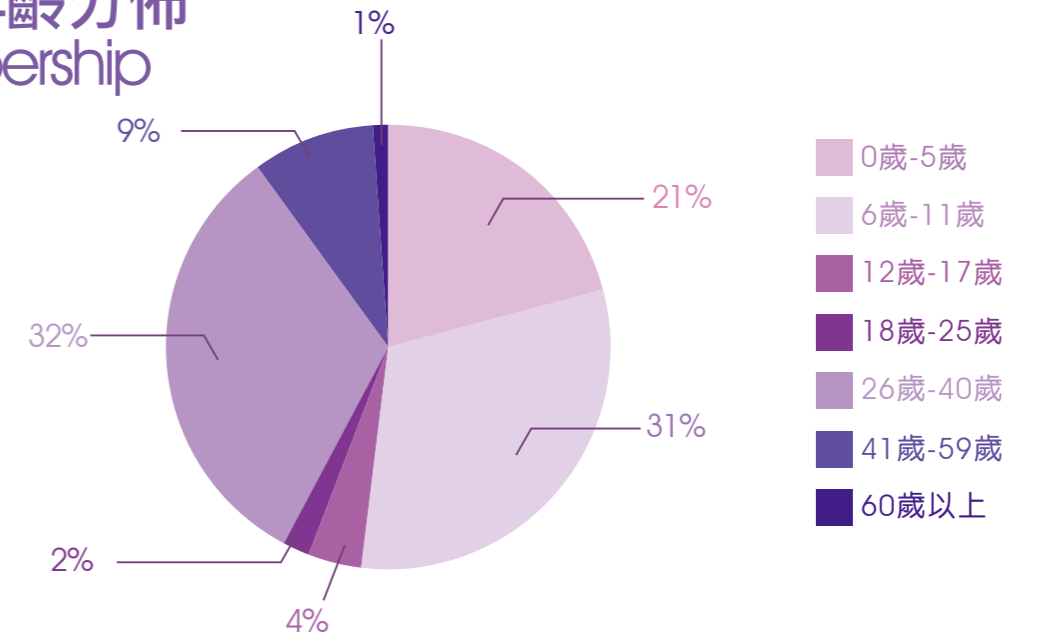
- 暑期活動
Summer program
- 公民教育活動
Citizenship Education Activities



接受服務個案
Cases of Beneficiaries (以2010年3月底之數字為依歸)

會員人數 Number of Members	偶到服務 Walk-in Services (Person Times)	諮詢服務 Enquires (Person Times)	開放節數 Opening Session (Sessions)
1,215	21,765	2,500	545

會員年齡分佈
Membership



服務統計
Statistics of Services

服務類別 Services Item	活動次數 Number of Service	服務人次 Quantity of Service
課餘託管服務 After School Care	206	14,368
幼兒親子活動 Early Childhood and Family Activities	362	4,725
兒童發展及成人興趣小組 Children Development and Adult Interest Group	712	6,692
家庭及社區教育活動 Family and Community Education Activities	1,187	79,243
靈智及生命教育活動 Religious services and Life Education Activities	118	2,154
合共服務 Total	2,585	107,182

香港宣教會 恩全鄰舍中心

Hong Kong Evangelical Church
Yan Tsuen Neighbourhood
Centre



背景及發展歷程

「香港宣教會恩全鄰舍中心」於2009年12月正式在大元邨泰怡樓B座地下開展服務。為本會最新開辦的自負盈虧社區服務中心，由恩全堂承辦及管理，希望能結合教會及中心資源，促進大埔社區的鄰舍關係，建構和諧及滿載基督福音的社區。

中心服務內容包括提供兒童服務、親職教育、品格教育、和諧家庭、愛心糧倉支援服務、長者關懷、社區義工及輔導服務等。中心以「睦鄰社區」及「全人發展」為服務方向，為區內的居民、家長及中小學生提供一站式的支援性和發展性服務。

Background and Development

Yan Tsuen Neighborhood Center is set up at Tai Yuen Estate, Tai Po in Dec, 2009. It is the newest self-financed community service centre and managed by HKEC Yan Tsuen Church. Hopefully, we integrate the resources of the church and Center to enhance the neighborhood relationship, to build a harmony community with the gospel of Jesus Christ.

We provide children service, parenting, character education, harmony families, food bank service, elderly caring, community volunteer and counseling service etc. "Harmonious Community" and "Holistic Development" are the direction of the center with comprehensive supportive and developmental service.

服務目標及內容

- 援助低收入及貧困家庭，開展「愛心糧倉-短期食物支援服務」
- 鼓勵老有所為及關愛長者，推展「耆樂無窮-長者學堂支援服務」
- 促進家庭關係及親職教育，推出「快樂家庭-家長教育親職教練」
- 提升學習困難兒童及家長訓練，開設「子情計劃-兒童發展障礙服務」
- 支援受情緒困擾的人士及家庭，提供「全人輔導-個人及情緒輔導服務」
- 推動鄰里關懷守望精神，發展「關愛家庭-義工大使探訪服務」



Service Objective and Content

- To help lower income and deprived families with Love Food Bank Short Term Support Service
- To encourage opportunities and Care to Elderly with Elderly Support Service
- To promotion families relationship and parenting with Happy Family Parenting Training
- To build up children who with learning difficulties and parenting in Special Education Needs Service
- To support individuals and families who with emotion perplexed in Holistic Personal and Emotion Counseling Service
- To promote Neighborhood caring with Caring families Volunteer visit Service.

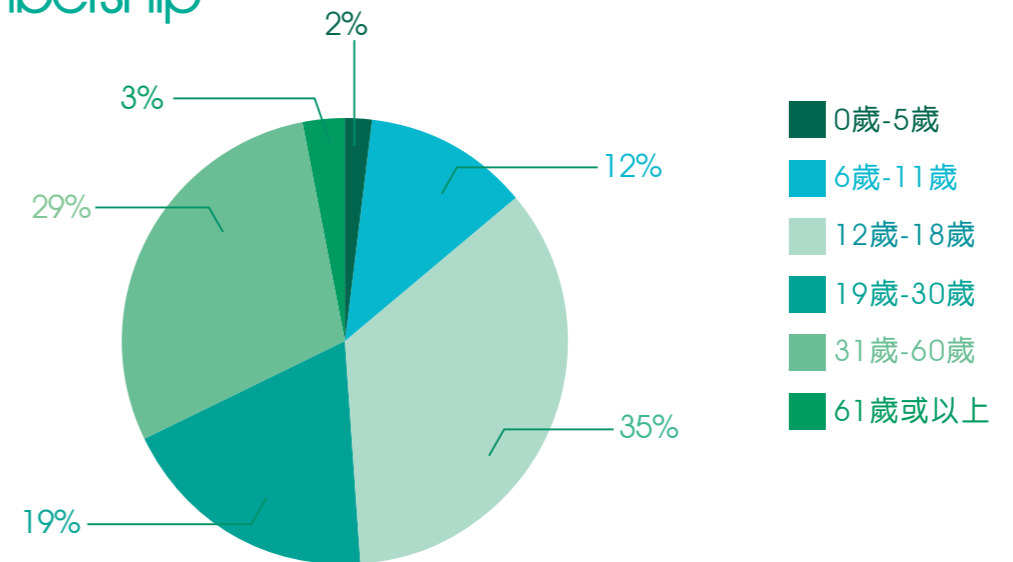


接受服務個案

Cases of Beneficiaries (以2010年3月底之數字為依歸)

會員人數 Number of Members	偶到服務 Walk-in Services (Person Times)	諮詢服務 Enquires (Person Times)	開放節數 Opening Session (Sessions)
122	156	234	84

會員年齡分佈 Membership



服務統計 Statistics of Services

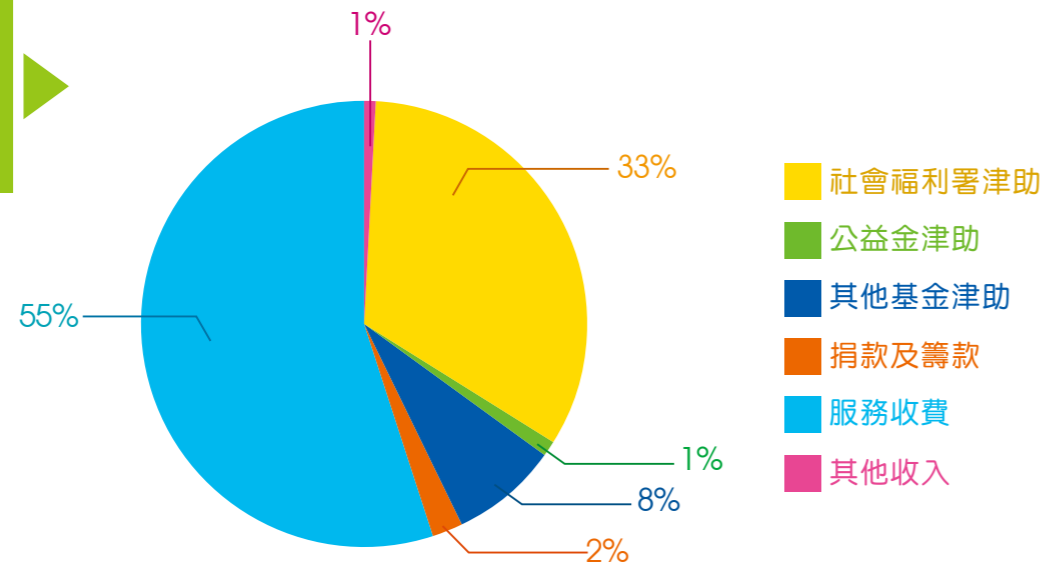
服務類別 Services Item	活動次數 Number of Service	服務人次 Quantity of Service
愛心糧倉-食物支援計劃 Love Food Bank	11	176
功課輔導 Tuition	61	549
子情計劃-兒童發展訓練班 Children Development Training Class	12	120
婦女跳舞班 Ladies Dance Group	16	176
輔導服務-個別約談 Counseling	36	36
社區活動-嘉年華會 Community Program- Carnival	2	600
家長講座 Parenting Talk	2	30
靈育及成長小組 Religious and Growth Group	12	96
合共服務 Total	152	1,783



Income and Expenditure Key Figures

收入及支出概覽

收入分類
Analysis of Income

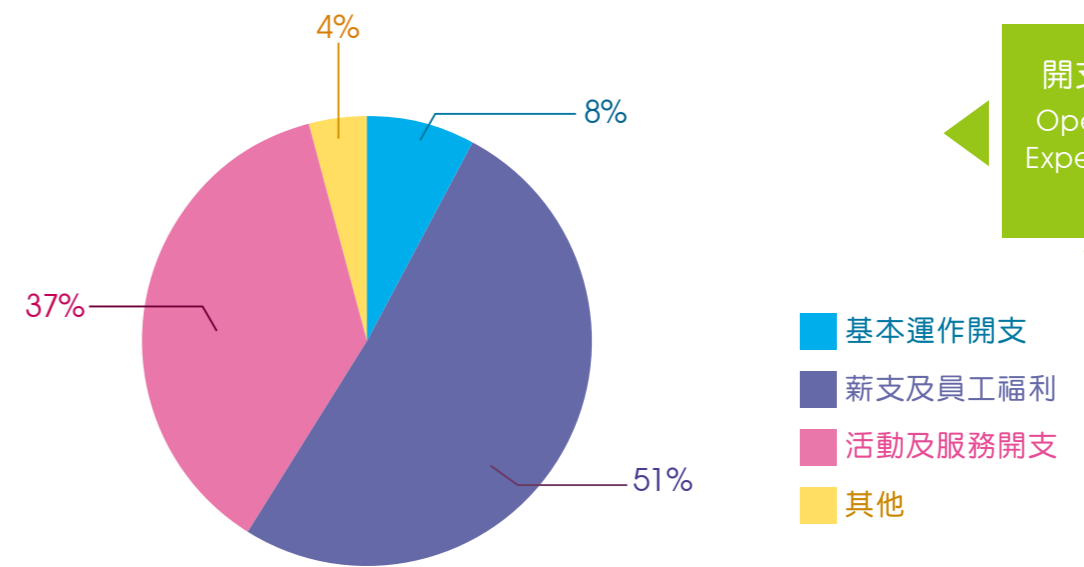


收入分類 Analysis of Income	總額 Amount	佔總收入比例 Proportion
社會福利署津助 SWD Subventions	\$7,707,098.00	33.21%
公益金津助 Community Chest Fund	\$236,494.00	1.02%
其他基金津助 Other Funding	\$1,805,439.00	7.78%
捐款及籌款 Donation and Fundraising	\$499,766.00	2.15%
服務收費 Programme Income	\$12,737,257.00	54.88%
其他收入 Others	\$224,577.00	0.97%
總收入 Total	\$23,210,631.00	100%

Income and Expenditure Key Figures

收入及支出概覽

開支分類
Operating Expenditure



開支分類 Operating Expenditure	總額 Amount	佔總開支比例 Proportion
基本運作開支 General operations	\$1,891,565.00	8.49%
薪支及員工福利 Personal Emoluments	\$11,144,591.00	50.04%
活動及服務開支 Direct Programmes	\$8,291,144.00	37.23%
其他 Others	\$942,183.00	4.23%
總開支 Total	\$22,269,483.00	100%

盈/虧 : \$941,148.00

財務摘要

Financial Review

HONG KONG EVANGELICAL CHURCH SOCIAL SERVICE LIMITED (Limited by Guarantee)

DETAILED STATEMENT OF COMPREHENSIVE INCOME
FOR THE YEAR ENDED MARCH 31, 2010
(Expressed in Hong Kong Dollars)

(For management purpose only)

	Social Service Limited (SSL)	Tai Hing Bradbury Elderly Centre (TH)	Tai Hing Bradbury Elderly Centre (Adult Education) (THAE)	Faming Family Centre (FC)	Bradbury Sheung Shui Family Centre (SS)	Bradbury Sheung Shui Family Centre (Adult Education) (SSAE)	Yan Lam Community Service Centre (YLCSC)	Integrated Home Care Services Team (HHT)	School Service Team (SST)	Yan Taiwun Neighbourhood Centre (YTNC)	Consolidated adjustments	Total	2009
Income													
Activity income	-	342,160	-	39,406	22,094	-	474,618	-	3,273,275	-	-	4,251,553	2,922,089
Bank interest income	63	102	-	6	13	-	2	-	16	-	-	449	8,648
Community Chest fund	-	117,088	-	-	-	-	-	247	-	-	119,406	236,494	229,866
Course, day care and tuition fee	-	-	2,020	1,590,686	972,757	5,325	606,401	-	-	12,685	-	3,189,874	2,701,289
Donation income	10,000	30,998	-	-	211,250	-	15,170	-	-	55,254	-	323,527	740,504
Fund raising income	-	21,492	-	-	154,747	-	-	855	-	-	-	176,239	195,955
Other grants and subvention	-	14,558	-	31,067	162,439	-	614,979	114,650	861,746	-	6,000	1,805,439	1,653,925
School project fee	-	-	-	60	1,171,188	-	-	-	3,417,484	-	(345,540)	3,417,484	4,046,042
Service income	56,916	899,851	29,519	152,106	236,220	75,709	316,722	981,438	-	-	(345,540)	1,807,146	1,794,071
Social welfare subvention	-	17,205	-	5,955	25,140	-	24,900	5,946,455	-	-	(5,400)	7,707,098	7,372,278
Subscription fee	28,800	35,238	-	15,167	209,479	-	1,720	2,927	7,597	-	(76,800)	71,200	53,817
Sundry income	95,779	1,478,692	31,539	1,832,453	3,165,327	81,034	2,054,512	7,046,572	7,660,118	67,939	(303,334)	23,210,631	21,857,268

(For management purpose only)

HONG KONG EVANGELICAL CHURCH SOCIAL SERVICE LIMITED
(Limited by Guarantee)

DETAILED STATEMENT OF COMPREHENSIVE INCOME

FOR THE YEAR ENDED MARCH 31, 2010

(Expressed in Hong Kong Dollars)

	Social Service Limited (SSL)	Tai Hing Elderly Centre (TH)	Tai Hing Elderly Centre (Adult Education) (THAAB)	Family Centre (FC)	Bradbury Sheung Shi Family Centre (SS)	Bradbury Sheung Shi Family Centre (Adult Education) (SSAE)	Yan Lam Community Service Centre (YLSCC)	Integrated Home Care Services Team (HHT)	School Service Team (SST)	Yan Tsuen Neighbourhood Centre (YTNC)	Consolidated adjustments	Total	2009
Expenditure													
Accounting fee	-	375,800	-	12,000	226,480	-	564,132	15,302	3,361,190	2,400	-	14,400	60,000
Activities and programme expenses	48,000	-	-	29,007	14,400	-	6,395	1,404	10,728	-	(21,672)	4,550,239	3,181,514
Administration fee	41,666	13,782	-	14,400	-	-	8,500	9,700	25,992	-	(87,528)	101,079	52,899
Advertising and promotion	10,000	8,525	2,443	7,000	7,400	2,507	8,500	9,700	12,500	4,000	-	72,575	59,039
Auditors' remuneration	900	430	450	122	2,253	313	1,345	464	1,192	-	-	7,689	6,045
Bank interest and charges	-	6,562	-	560	170	-	2,749	-	-	341	-	10,382	17,283
Books, newspaper and magazine	-	10,072	-	5,191	-	-	-	146,936	-	2,575	(16,820)	147,954	35,563
Cleaning expenses	-	-	-	913,712	855,060	-	387,755	81,201	-	4,885	-	2,161,412	1,728,538
Course, day care and tutorial class expenses	-	-	-	16,354	46,960	-	274,710	475,025	-	-	121,882	541,107	559,403
Depreciation	-	-	-	1,205	20,410	-	9,064	27,576	-	-	(15,540)	490,164	509,997
Food	34,205	600	-	-	6,378	-	-	-	-	-	-	68,759	4,871
Insurance	-	-	-	46,684	99,009	2,742	66,133	324,887	113,785	1,094	-	688,895	676,573
Mandatory and ORSO contribution	4,000	-	-	-	-	-	-	-	-	-	-	4,000	-
Membership fee	-	34,561	-	46,684	99,009	2,742	66,133	324,887	113,785	1,094	-	688,895	676,573
Minor purchases, repair and maintenance	-	54,317	3,050	3,737	55,680	-	38,246	164,649	18,838	630	-	339,147	170,456
Motor vehicle expenses	-	-	-	-	158,347	-	-	110,940	-	-	-	158,347	117,099
Other service expenses	1,760	825	-	2,047	3,295	-	-	140	-	-	-	8,067	135,853
Postage	1,100	19,052	1,873	15,748	28,395	4,175	15,832	14,930	14,407	705	-	116,217	115,517
Printing and stationery	2,605	138,480	-	134,106	195,720	-	258,222	71,856	-	45,650	-	844,014	736,848
Professional fee	-	714,302	14,908	605,302	1,319,483	81,813	1,179,880	4,452,417	2,037,047	21,885	-	10,427,037	10,776,638
Rent and rates	-	-	-	19,067	38,889	-	-	398,220	435,463	-	-	800,349	1,067,030
Rural services expenses	-	-	-	-	11,680	-	-	-	630	-	-	68,220	87,960
Salaries	-	9,199	-	3,890	11,680	-	3,260	398,220	630	-	-	68,220	87,960
School project expenses	-	8,470	-	3,890	67,045	-	12,864	11,928	-	2,097	-	28,659	21,288
Service contract out	1,333	13,744	-	13,648	11,787	-	5,625	5,217	-	2,305	-	103,737	92,250
Staff welfare	-	694	-	657	535	-	1,346	14,289	15,596	150	-	52,326	46,719
Sundry expenses	-	31,742	939	19,937	85,293	-	56,794	91,351	303,676	1,315	(9,743)	23,524	11,613
Telephone and fax	-	-	-	-	-	-	-	-	-	-	-	-	-
Traveling	-	-	-	-	-	-	-	-	-	-	-	-	-
Tutor expenses	-	-	-	-	-	-	-	-	-	-	-	-	-
Utility expenses	145,569	1,441,177	23,663	1,876,214	3,254,669	92,486	2,893,052	6,417,532	6,532,387	90,012	(317,278)	22,269,483	20,579,433
Surplus/(deficit) and total comprehensive income for the year	(49,790)	37,515	7,876	(43,761)	(89,342)	(11,432)	(838,540)	629,040	1,307,731	(22,073)	13,944	941,148	1,277,835

HONG KONG EVANGELICAL CHURCH SOCIAL SERVICE LIMITED
(Limited by Guarantee)

STATEMENT OF FINANCIAL POSITION

AS AT MARCH 31, 2010

(Expressed in Hong Kong Dollars)

	Notes	2010	2009
ASSETS			
Non-current asset			
Property, plant and equipment	6	1,982,941	1,546,296
Current assets			
Accounts receivable		1,242,848	1,088,798
Utility deposits and prepayment		282,157	499,689
Bank balances and cash		6,721,842	5,404,360
		8,246,847	6,992,847
Total assets		10,229,788	8,539,143

NG, SUEN, LAU C.P.A. LIMITED
Certified Public Accountants (Practising)

HONG KONG EVANGELICAL CHURCH SOCIAL SERVICE LIMITED
(Limited by Guarantee)

STATEMENT OF FINANCIAL POSITION - CONTINUED

AS AT MARCH 31, 2010
(Expressed in Hong Kong Dollars)

	Notes	2010	2009
RESERVES AND LIABILITIES			
Reserves			
General fund		1,399,269	963,280
Surplus reserve	7	3,562,607	3,057,448
Lottery fund block grant reserve		-	28,643
Reserve for future development		94,409	94,409
		<u>5,056,285</u>	<u>4,143,780</u>
Current liabilities			
Accounts payable and accruals		1,250,988	683,093
Receipt in advance		1,234,757	998,606
Deferred income	8	238,812	358,218
Loans from member churches	9	2,355,446	2,355,446
Bank overdraft		93,500	-
		<u>5,173,503</u>	<u>4,395,363</u>
Total reserves and liabilities		<u>10,229,788</u>	<u>8,539,143</u>

The accompanying notes form an integral part of the financial statements.

The financial statements on pages 5 to 21 have been approved and authorised for issue by the Board of Directors and signed on its behalf by:


Director


Director



Acknowledgements

鳴謝

我們謹代表所有受惠兒童、青少年、家庭及長者，衷心感謝您們的支持。
由於篇幅所限，致謝名單不能盡錄，如有遺漏，謹此致歉。

On the behalf of our beneficiaries, we extend our sincere thanks to all of them for supporting our work in the year of 2009/2010. Owing to limited space, we regret for being unable to print all their names.

攜手扶弱基金 Partnership Fund for Disadvantage	香港公益金 The Community Chest of Hong Kong
蘋果日報慈善基金 Apple Daily Charity Fund	循理會屯門青少年綜合服務中心 Free Methodist Church Leung Tin Children & Youth Centre
基督教互愛中心 Wu Oi Christian Centre	屯門區議會 Tuen Mun District Council
輕鐵義工隊 Hong Kong's Light Rail Volunteer Team	救世軍青少年綜合服務中心 The Salvation Army Youth Integrated Service Center
衛生署 Department of Health	匯豐銀行慈善基金社區發展計劃 Hong Kong Bank Foundation
公益青年服務團 Community Youth Club Senior Members Service Group	康樂及文化事務署 Leisure and Cultural Services Department
香港宣教會恩福堂 Hong Kong Evangelical Church Yan Fook Church	齊賢社義工協會有限公司 Excellent Volunteers Association
耶穌愛大埔運動委員會 Jesus Loves Tai Po Movement Committee	新福協會 Mission to New Arrivals Limited
城市睦福 Peace Maker	禧福協會 Julibee Ministries
基督教輔導學院 Hong Kong Institute of Christian Counselors	香港哥爾夫球會 Hong Kong Golf Club

Acknowledgements

鳴謝

北區區議會 North District Council	社區投資共享基金 Community Investment and Inclusion Fund
健康護理促進基金 Health Care Promotion Fund	社會福利署 Social Welfare Department
香港理工大學康復治療科學系 Department of Rehabilitation Sciences The Hong Kong Polytechnic University	何東爵士慈善基金 The Sir Robert Ho Tung Charitable Fund
勞工及福利局 Labour and Welfare Bureau	北區公民教育委員會 North District Committee on the Promotion of Civic Education
古洞村村務委員會 Kwu Tung Rural Committee	坑頭村村務委員會 Hang Tau Rural Committee
金錢村村務委員會 Kam Tsin Village Rural Committee	燕崗村村務委員會 Yin Kong Rural Committee
河上鄉村務委員會 Ho Sheung Heung Rural Committee	丙崗村村務委員會 Ping Kong Rural Committee
蕉徑村村務委員會 Tsiu Keng Rural Committee	蕉徑蔬菜產銷貸款有限責任合作社 Tsiu Keng Agricultural Products Marketing and Credit Co-operative Society, Limited
唐公嶺村村務委員會 Tong Kung Leng Rural Committee	松柏塢村村務委員會 Tsong Pak Long Rural Committee
琮豐文具紙料(古洞街市) King Fung Papers (Kwu Tung Market)	剪髮舍(古洞街市) Barbra Shop (Kwu Tung Market)
古洞新街市購物中心商會 Kwu Tung Market Commerce	金錢村何東學校 Kam Tsin Ho Tung School
河上鄉康樂中心 Ho Sheung Heung Recreation Centre	東方日報慈善基金 Oriental Daily News Charitable Fund
仁濟醫院 Yan Chai Hospital	安老事務委員會 Elderly Commission



捐款回條

Donation Form

Donation Form

捐款回條

本機構為香港註冊慈善團體

We are an incorporated charitable organization in Hong Kong: IRD ref: 91/4135

本人/公司樂意支持貴會之社會服務，並捐助港幣
I / We would like to donate,

- \$100 \$500 \$1,000 \$5,000
 其他數目 Others (多少無拘) \$ _____

in support of HKECSS's social service, 予下列服務單位 and please distribute to the following service unit

(請在適用方格以 表示，並註明金額之分配) (Please tick the suitable box and state the proposed distribution):

- 機構整體發展 Agency Development \$ _____
 大興白普理老人中心 Bradbury Tai Hing Elderly Centre \$ _____
 白普理上水家庭中心 Bradbury Sheung Shui Family Centre \$ _____
 綜合家居照顧服務隊 Integrated Home Care Service Team \$ _____
 粉嶺家庭中心 Fanling Family Centre \$ _____
 學校服務隊 School Services Team \$ _____
 恩霖社區服務中心 Yan Lam Community Service Centre \$ _____
 恩全鄰舍中心 Yan Tsuen Neighbourhood Centre \$ _____
 其他服務發展用途 Other use of development \$ _____

捐款方法 (請在適用方格以 表示) METHODS OF DONATION

- 劃線支票 (抬頭請註明「香港宣教會社會服務處有限公司」
 Please use crossed cheque payable to "Hong Kong Evangelical Church Social Service Limited"
 直接將捐款存入本會戶口 - 香港上海匯豐銀行戶口 : 561-0-016924
 Transfer the amount to HKECSS's saving account at Hong Kong Bank
 (account number: 561-0-016924)

備註Remarks:

(1) 填妥表格後，請連同劃線支票或存款收據寄交：上水彩園邨彩麗樓地下29至40號 香港宣教會社會服務處有限公司收

Please complete form and post together with the crossed cheques, and/or ATM / bank receipts to Hong Kong Evangelical Church Social Service Limited, 29-40, G/F Choi Lai House, CHoi Yuen Estate, Sheung Shui NT

(2) 此表格之個人資料除作上述用途外，亦會用以寄發本中心資料。如不擬收取，或需查詢/更改個人資料，請與各中心聯絡。

Your personal data provided in this form will be used for the above purpose. It may also be used for sending the Organization's publicity materials to you. If you do not wish to receive such material, or if you want to have access to or charge your personal data, please contact the units.

(3) 本會將寄回正式收據。捐款滿一百元，收據可作免稅之用。

Official receipt would be provided. Donations over \$HKD100 are tax-deductible.

服務單位通訊錄

Service Units Contact

Service Units Contact

服務單位通訊錄

Coordination Office / 協調辦事處	Contact Person / 聯絡人
29-40, G/F, Choi Lai House, Choi Yuen Estate, Sheung Shui, NT 上水彩園邨彩麗樓地下29至40號 Tel : 2670 2995 Fax : 2670 8985 Email : info@hkecss.org	Mr Lui Hing Chung (Executive Secretary) 呂慶忠先生(執行秘書)
Tai Hing Bradbury Elderly Centre / 大興白普理老人中心	Contact Person / 聯絡人
15-21, G./F, Hing Yiu House, Tai Hing Estate, Tuen Mun 屯門大興村興耀樓地下15-21號 Tel : 2465 7163 Fax : 2456 2825 Email : thc@hkecss.org	Ms Yip Yin (Centre In- Charge) 葉燕女士(中心主任)
Bradbury Sheung Shui Family Centre / 白普理上水家庭中心	Contact Person / 聯絡人
29-40, G/F, Choi Lai House, Choi Yuen Estate, Sheung Shui, NT 上水彩園邨彩麗樓地下29至40號 Tel : 2670 2995 Fax : 2670 8985 Email : sf@hkecss.org	Ms Tsang Yuk Ying (Centre In- Charge) 曾玉英女士(中心主任)
Bradbury Sheung Shui Family Centre - Integrated Home Care Services Team / 白普理上水家庭中心綜合家居照顧服務隊	Contact Person / 聯絡人
112-114, G./F Ching Ping House, Tai Ping Estate, Sheung Shui 上水太平邨平靜樓地下 Tel : 2672 4160 Fax : 2672 9640 Email : it@hkecss.org	Ms Tsang Yuk Ying (Unit In- Charge) 曾玉英女士(單位主任)
Fanling Family Centre / 粉嶺家庭中心	Contact Person / 聯絡人
3, G/F, Tim Ming House, Wah Ming Estate, Fanling 粉嶺華明邨添明樓地下3號 Tel : 2676 4010 Fax : 2677 9252 Email : ffc@hkecss.org	Rev Chan Kam Lin (Centre Director) 陳金蓮牧師(中心總監)
School Services Team / 學校服務隊	Contact Person / 聯絡人
Wing B & C, G/F Ching Ping House, Ching Ho Estate, Sheung Shui 上水清河邨清平樓地下B翼及C翼 Tel : 2672 4771 Fax : 2242 2522 Email : st@hkecss.org	Mr Yip Kin Chung (Unit In-Charge) 葉建忠先生(單位主任)
Yan Lam Community Service Center / 恩霖社區服務中心	Contact Person / 聯絡人
Wing B & C, G/F Ching Ping House, Ching Ho Estate, Sheung Shui 上水清河邨清平樓地下B翼及C翼 Tel : 2672 4771 Fax : 2242 2522 Email : yl@hkecss.org	Ms Cheung Yuen Siu (Centre In-Charge) 張婉笑女士(中心主任)
Yan Tsuen Neighbourhood Center / 恩全鄰舍中心	Contact Person / 聯絡人
Rm 17-19, G/F Tai Yee House, Tai Yuen Estate, Tai Po 大埔大元邨泰怡樓B座地下17-19室 Tel : 2666 9779 Fax : 2125 5013 Email : ytc@hkecss.org	Mr Lau Wing (Centre In- Charge) 劉穎先生(中心主任)



香港宣教會社會服務處有限公司
Hong Kong Evangelical Church Social Service Limited

新界上水彩園邨彩麗樓地下29-40號
29-40, G/F, Choi Lai House, Choi Yuen Estate,
Sheung Shui, NT

電話: 2670 2995 傳真: 2670 8985

網址: www.hkecss.org

電郵: info@hkecss.org